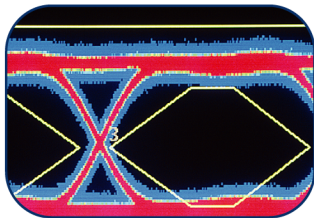


RFXpress® RFX100
Advanced RF/IF/IQ Waveform Creation and Editing Software
for the AWG5000/B & AWG7000/B Series Generators
Quick Start User Manual



RFXpress® RFX100
Advanced RF/IF/IQ Waveform Creation and Editing Software
for the AWG5000/B & AWG7000/B Series Generators
Quick Start User Manual

Copyright © Tektronix. All rights reserved. Licensed software products are owned by Tektronix or its subsidiaries or suppliers, and are protected by national copyright laws and international treaty provisions.

Tektronix products are covered by U.S. and foreign patents, issued and pending. Information in this publication supersedes that in all previously published material. Specifications and price change privileges reserved.

TEKTRONIX and TEK are registered trademarks of Tektronix, Inc.

RFXpress RFX100 is a registered trademark of Tektronix, Inc.

Contacting Tektronix

Tektronix, Inc.
14200 SW Karl Braun Drive
P.O. Box 500
Beaverton, OR 97077
USA

For product information, sales, service, and technical support:

- In North America, call 1-800-833-9200.
- Worldwide, visit www.tektronix.com to find contacts in your area.

Warranty 9(b)

Tektronix warrants that the media on which this software product is furnished and the encoding of the programs on the media will be free from defects in materials and workmanship for a period of three (3) months from the date of shipment. If any such medium or encoding proves defective during the warranty period, Tektronix will provide a replacement in exchange for the defective medium. Except as to the media on which this software product is furnished, this software product is provided "as is" without warranty of any kind, either express or implied. Tektronix does not warrant that the functions contained in this software product will meet Customer's requirements or that the operation of the programs will be uninterrupted or error-free.

In order to obtain service under this warranty, Customer must notify Tektronix of the defect before the expiration of the warranty period. If Tektronix is unable to provide a replacement that is free from defects in materials and workmanship within a reasonable time thereafter, Customer may terminate the license for this software product and return this software product and any associated materials for credit or refund.

THIS WARRANTY IS GIVEN BY TEKTRONIX WITH RESPECT TO THE PRODUCT IN LIEU OF ANY OTHER WARRANTIES, EXPRESS OR IMPLIED. TEKTRONIX AND ITS VENDORS DISCLAIM ANY IMPLIED WARRANTIES OF MERCHANTABILITY OR FITNESS FOR A PARTICULAR PURPOSE. TEKTRONIX' RESPONSIBILITY TO REPLACE DEFECTIVE MEDIA OR REFUND CUSTOMER'S PAYMENT IS THE SOLE AND EXCLUSIVE REMEDY PROVIDED TO THE CUSTOMER FOR BREACH OF THIS WARRANTY. TEKTRONIX AND ITS VENDORS WILL NOT BE LIABLE FOR ANY INDIRECT, SPECIAL, INCIDENTAL, OR CONSEQUENTIAL DAMAGES IRRESPECTIVE OF WHETHER TEKTRONIX OR THE VENDOR HAS ADVANCE NOTICE OF THE POSSIBILITY OF SUCH DAMAGES.

Table of Contents

General Safety Summary	iii
Preface	v
Key Features	vi
Documentation	vi
Conventions Used in This Manual.....	vii
Installation.....	1
Starting the Software.....	1
Closing the Software.....	1
Software Upgrades.....	1
Using the Software	3
Getting Acquainted with the Software	3
Generating a Single Carrier Signal.....	3
Generating a Multi-Carrier RF Signal	5
Application Examples: Generic Signal.....	11
Replay a Captured Waveform to Test Receivers	11
Simulating a MultiPath Environment for a Generic Signal.....	16
Creating a Hopping Waveform to Test SIGINT Receivers.....	18
Calibrating a Generic Signal.....	21
Application Examples: UWB-WiMedia.....	26
Creating a UWB Waveform to Test Your Receivers	26
Characterize Receiver Design for Receiver Verification and Stress Test.....	28
Using Calibration to Increase the Flatness of a UWB Signal Path to the DUT	30
Creating a Band Group 6 Signal Using an External IQ Modulator.....	32
Introducing Real-World Impairments in a UWB Signal	39
Application Examples: Radar	42
Generating an LFM Waveform with Coherent Carrier for Pulse Compression Radar.....	42
Generating a Hopping Radar Waveform: Creating a Pulse-to-Pulse Frequency Hopping Signal.....	45
Creating Costa's Modulation.....	49
Creating a Radar Waveform using Staggered PRI for Better Range Ambiguity	52
Simulating Multiple Targets for Radar Receiver Testing (Different Pulse Groups)	54
Generating and Measuring a Wideband LFM with Calibration using a Tektronix Oscilloscope.....	59
Index	

General Safety Summary

Review the following safety precautions to avoid injury and prevent damage to this product or any products connected to it.

To avoid potential hazards, use this product only as specified.

Only qualified personnel should perform service procedures.

While using this product, you may need to access other parts of a larger system. Read the safety sections of the other component manuals for warnings and cautions related to operating the system.

To Avoid Fire or Personal Injury

Connect and Disconnect Properly. Do not connect or disconnect probes or test leads while they are connected to a voltage source.

Ground the Product. This product is indirectly grounded through the grounding conductor of the mainframe power cord. To avoid electric shock, the grounding conductor must be connected to earth ground. Before making connections to the input or output terminals of the product, ensure that the product is properly grounded.

Observe All Terminal Ratings. To avoid fire or shock hazard, observe all ratings and markings on the product. Consult the product manual for further ratings information before making connections to the product.

Power Disconnect. The power cord disconnects the product from the power source. Do not block the power cord; it must remain accessible to the user at all times.

Do Not Operate Without Covers. Do not operate this product with covers or panels removed.

Do Not Operate With Suspected Failures. If you suspect that there is damage to this product, have it inspected by qualified service personnel.

Avoid Exposed Circuitry. Do not touch exposed connections and components when power is present.

Terms in this Manual

These terms may appear in this manual:



WARNING. *Warning statements identify conditions or practices that could result in injury or loss of life.*



CAUTION. *Caution statements identify conditions or practices that could result in damage to this product or other property.*

Preface

The RFXpress RFX100 is a software product that allows you to create digitally modulated baseband, IF, and RF signals that can be generated through arbitrary waveform generators (AWG). This software runs as an integral part of AWG5000/AWG5000B and AWG7000/AWG7000B series arbitrary waveform generators and can also run from an external PC.

You can use RFXpress to:

- Design, debug, and develop wideband wireless communications receivers
- Generate UWB-WiMedia compliant and custom signals
- Generate general purpose digitally modulated IQ, IF, and RF signals

Key Features

- Define baseband I and Q signals using various modulation schemes
- Create single- and multi-carrier signals where each carrier is independently defined
- Apply impairments such as quadrature error and imbalance or non-linear impairments
- Add interferences during waveform creation
- Remotely connect to Tektronix oscilloscopes and to an Agilent Performance Signal Generator (PSG®)
- Remotely configure a Tektronix oscilloscope and an Agilent Performance Signal Generator (PSG®)

UWB-WiMedia

- Direct RF generation of WiMedia BG1 and BG2 waveforms
- Ability to generate IQ and IF waveforms including band hopping for all band groups
- User-defined IF frequency including TFC pattern
- Comprehensive WiMedia signal generation support for MAC and PHY layers
- Ability to create UWB-WiMedia correction files, which can be automatically applied as compensation to accurately generate signals
- Ability to use Gated Noise to define noise profiles for each section of the UWB packet
- Create tone nulling with intermediate values (–40 dB to +20 dB) for OFDM carrier mapping

Radar

- Create single or multiple pulse groups forming a pulse train
- Define each pulse group independently
- Create different predefined pulse shapes including user defined shapes for a pulse group
- Display a dynamic pulse plot showing the pulse shape, droop, and ripple parameters
- Ability to have pulse-to-pulse hopping within a pulse group
- Apply impairments like Edge Jitter, Width Jitter, Overshoot, Ripple and Droop on a pulse group
- Apply different modulation schemes including user defined modulation
- Ability to use the AWG sequence mode to optimize the memory and create large number of pulses

Documentation

RFXpress RFX100 Online Help, English	Tektronix part number 076-0081-XX
RFXpress RFX100 User Manual, English, (PDF)	Tektronix part number 077-0045-XX
RFXpress RFX100 Quick Start User Manual, English (PDF)	Tektronix part number 077-0159-XX
RFXpress RFX100 Installation Manual, English	Tektronix part number 077-0160-XX

Conventions Used in This Manual

When steps require a sequence of selections using the software interface, the ">" delimiter marks each transition between a menu and an option. For example, File > Save.

The document MultiBand OFDM Physical Layer Specification version 1.2 (Draft) by WiMedia Alliance is referred to as the "WiMedia standard" or "WiMedia specification".

The term "DUT" refers to a device under test.

The terms "signal" and "waveform" are used interchangeably in this manual.

Installation

For information on how to install this software, refer to the *RFXpress Installation Manual*, Tektronix part number 077-0160-XX.

Starting the Software

Start the software in either of the following ways:

- From Start > Program Files > Tektronix RFXpress, click RFXpress.
- Double-click the RFXpress icon on your desktop.

Closing the Software

Click File > Exit to close the software.

Software Upgrades

Periodic software upgrades may become available. The software is operational only if you have a valid option key for the specific instrument model and serial number.

To check for upgrades:

1. Go to www.tektronix.com/software.
2. Enter the product name (RFXpress).

Using the Software

This section covers the following information:

- Getting acquainted with the software
- Generating a signal
- Adding impairments to the signal
- Compiling a signal
- Graphing a signal

Getting Acquainted with the Software

Using the Software Interface

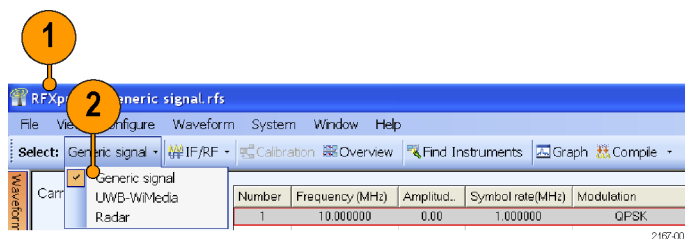
Use the keyboard or mouse to make selections in the software.

Use menus, toolbars, check boxes, and on-screen buttons to control the software functions. Use Microsoft Windows techniques to navigate menus and select or clear check boxes.

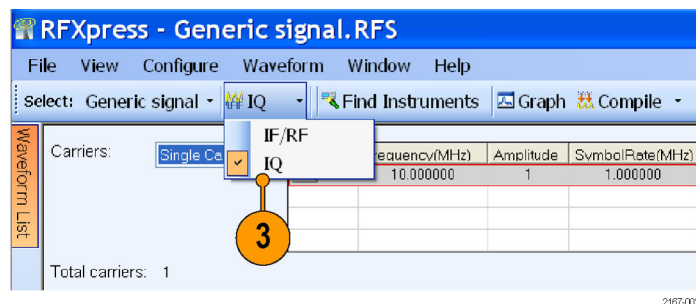
Generating a Single Carrier Signal

This section shows you a step-by-step procedure for creating a single carrier QPSK baseband signal.

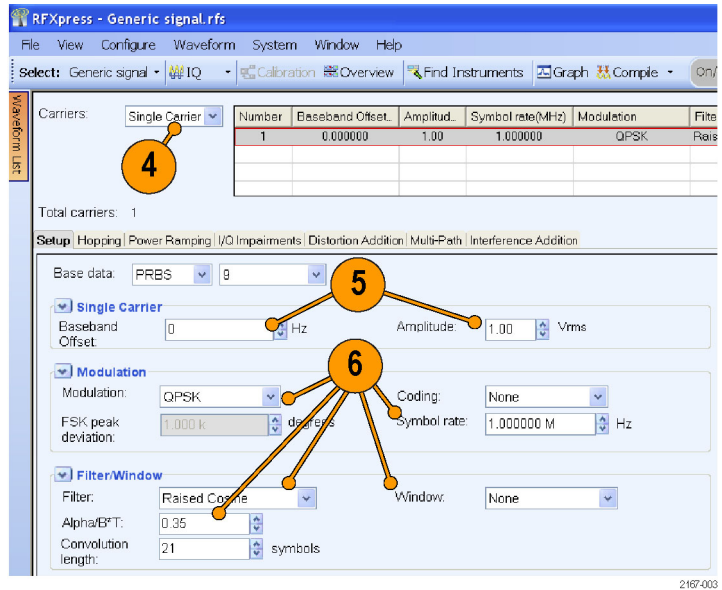
1. Start RFXpress.
2. From the toolbar, click **Select > Generic signal**.



3. Set the signal type to **IQ**.



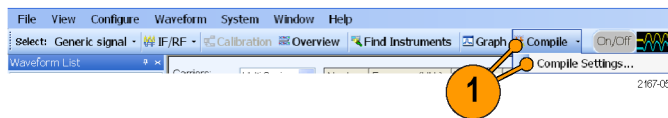
4. Click **Carriers > Single Carrier**.
5. Select the carrier and set the following:
 - **Baseband Offset** to 0 Hz
 - **Amplitude** to 1 Vrms
6. Ensure that the following parameters are set:
 - **Modulation** is QPSK
 - **Filter** is Raised Cosine
 - **Symbol rate** is 1 MHz
 - **Alpha/B*T** is 0.35
 - **Window** is None



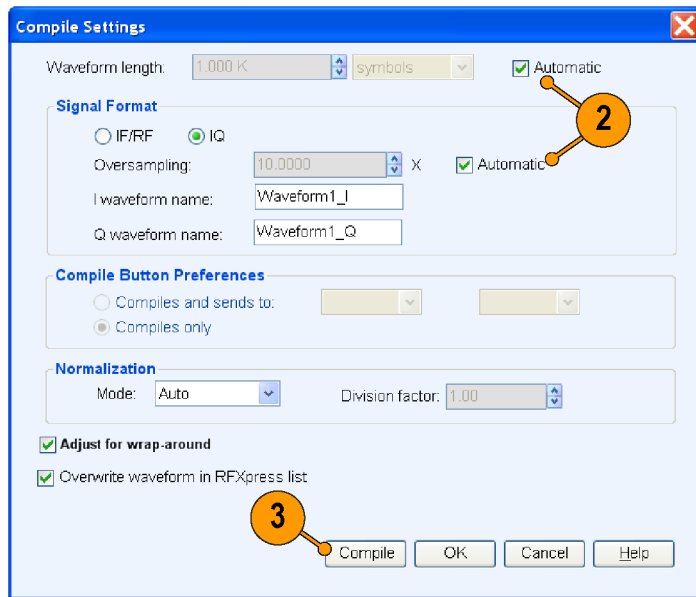
Compiling a Signal

Follow these steps to compile and generate a signal using the parameters that you just defined.

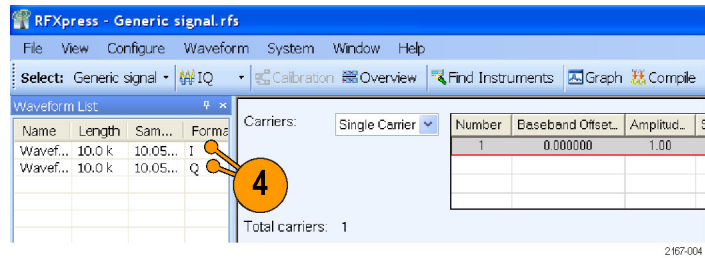
1. From the toolbar, click **Compile > Compile Settings**.



2. Retain the default values as they are. Ensure that the **Automatic** options are selected.
3. Click **Compile**.



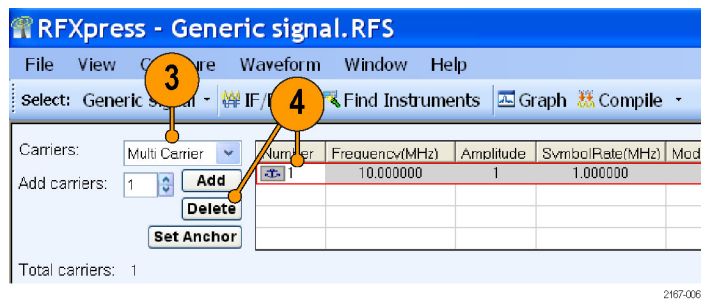
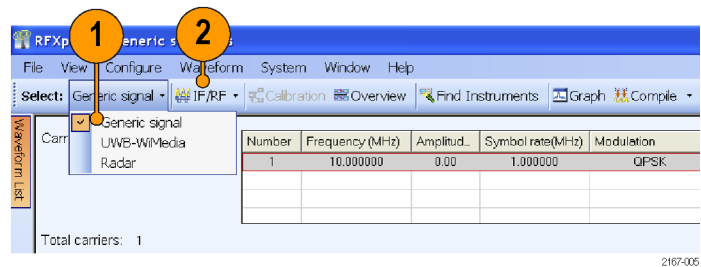
- The compiled waveform is displayed in the waveform list.



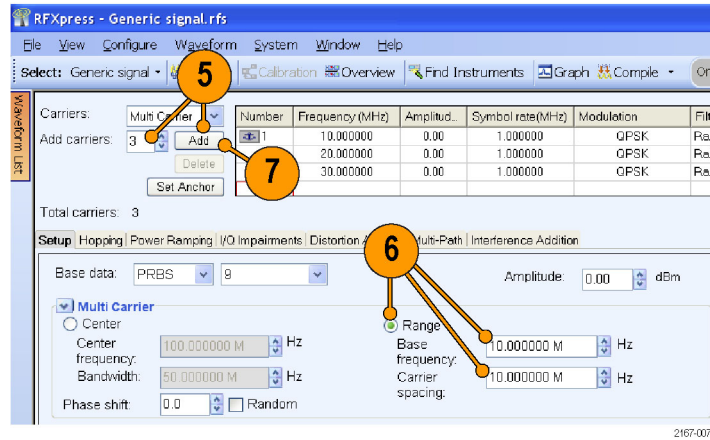
NOTE. If the waveform list is not visible, click **Window > Waveform List** to view it.

Generating a Multi-Carrier RF Signal

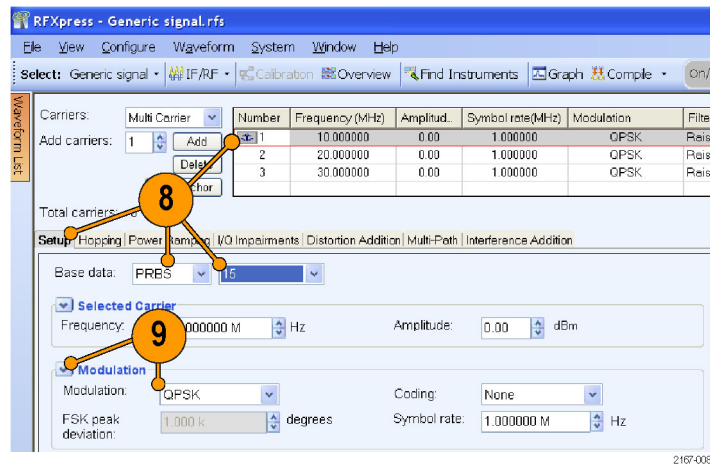
- From the toolbar, click **Select > Generic signal**.
- Select the signal type as **IF/RF**.
- Select **Multi Carrier**.
- You can either add carriers directly or delete the existing carrier and add new ones. Select the carrier in the table and click **Delete**.



5. Click **Add carriers** and type 3.
6. Click **Range**. Set the **Base Frequency** to 10 M and the **Carrier Spacing** to 10 M.
7. Click **Add**.

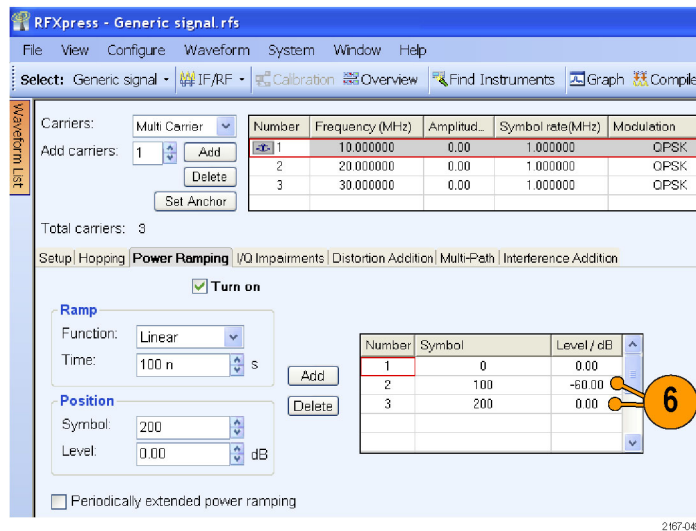
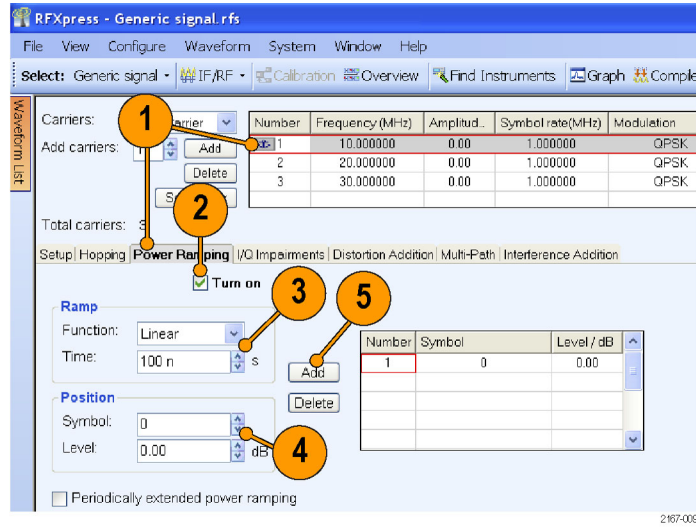


8. Select the first carrier from the table. In the **Setup** tab, set the **Base data** to PRBS and select 15 from the adjacent field.
9. Set the **Modulation** for the carrier to QPSK.
10. Repeat steps 8 and 9 for the remaining carriers, setting the **Base data** to PRBS 21 and PRBS 7, and **Modulation** to QPSK.

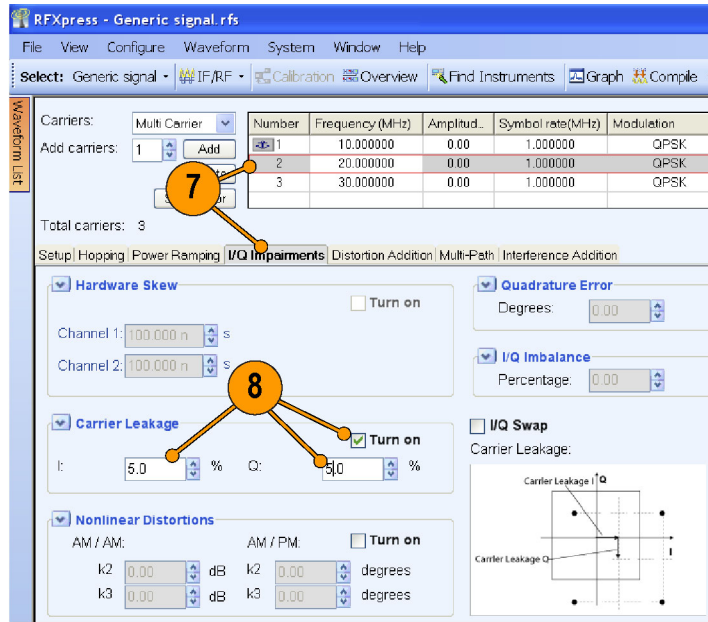


Adding Power Ramping, I/Q Impairments, and Interference

1. Select the first carrier from the table. Select the **Power Ramping** tab.
2. Select **Turn on**.
3. Set the Ramp parameters:
 - **Function** to Linear
 - **Time** to 100 nsec
4. Set the Position parameters:
 - **Symbol** to 0
 - **Level** to 0.00
5. Click **Add**.
6. Repeat steps 4 and 5 two more times, adding these parameters:
 - **Symbol** = 100
 - **Level** = -60 dB
 - and
 - **Symbol** = 200
 - **Level** = 0 dB

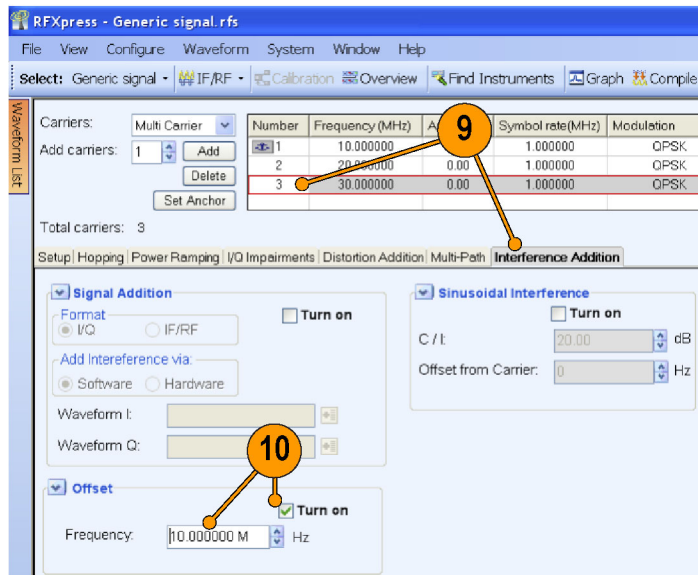


7. Select the second carrier from the table. Select the **I/Q Impairments** tab.
8. In the Carrier Leakage group, select **Turn on**. Set the following parameters:
 - I to 5.0
 - Q to 5.0



2167-010

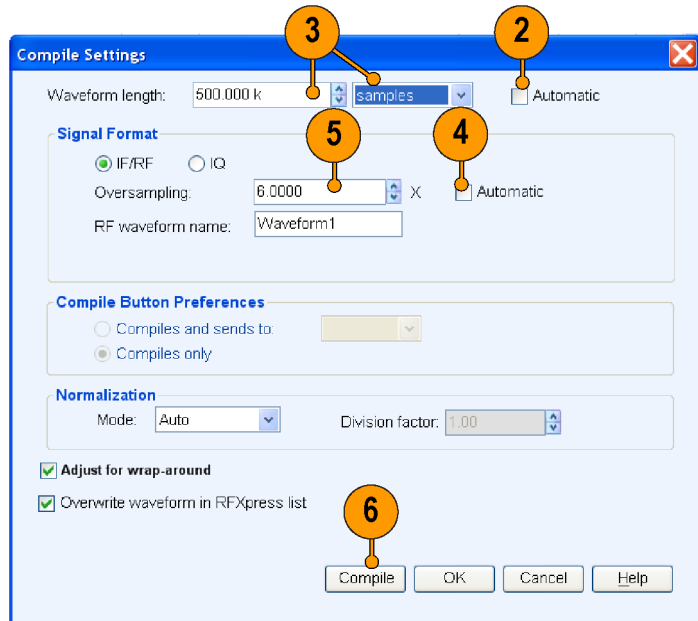
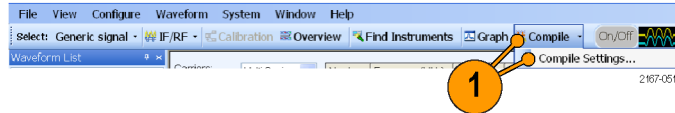
9. Select the third carrier from the table. Select the **Interference Addition** tab.
10. In the Offset group, select **Turn on**. Set the **Frequency** to 10 M.



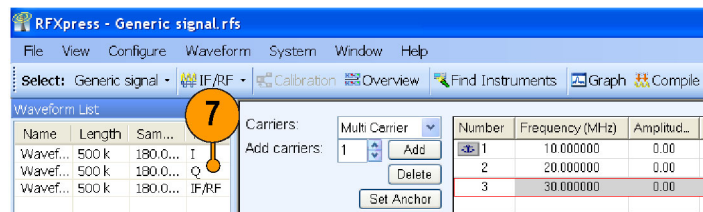
2167-011

Compile Settings and Compile

1. From the toolbar, click **Compile > Compile Settings**.
2. Clear **Automatic**.
3. Set the **Waveform length** to 500K and the units to samples.
4. Clear **Automatic**.
5. Set the **Oversampling** to 6.00.
6. Click **Compile**.
7. The compiled waveform is displayed in the waveform list.



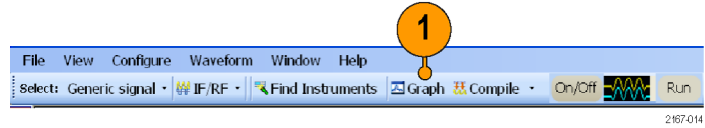
2167-012



2167-013

Previewing Graphs

1. From the toolbar, click **Graph**.

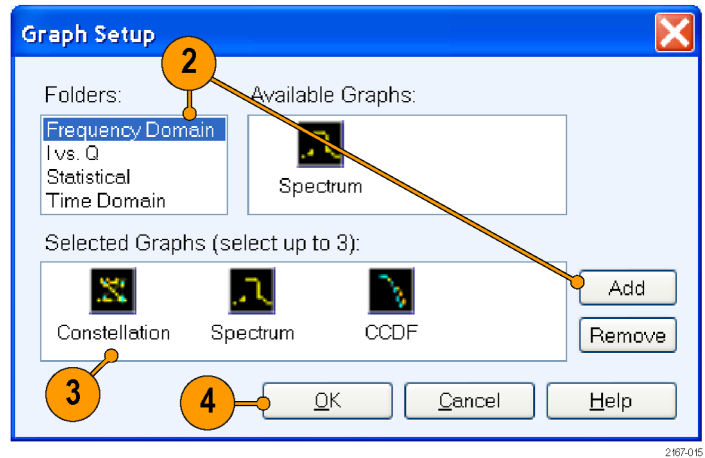


2. In Graph Setup, select the folder and click **Add** to add the following graphs:

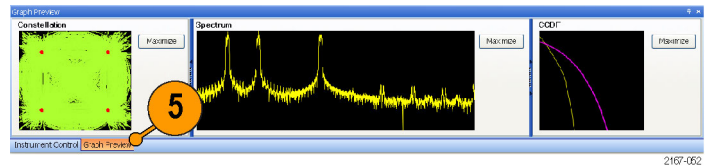
- Frequency Domain: Spectrum
- I Vs Q: Constellation
- Statistical: CCDF

3. The graphs are added to the Selected Graphs.

4. Click **OK**.



5. Click **Graph Preview** at the lower left of the screen to view the graphs.



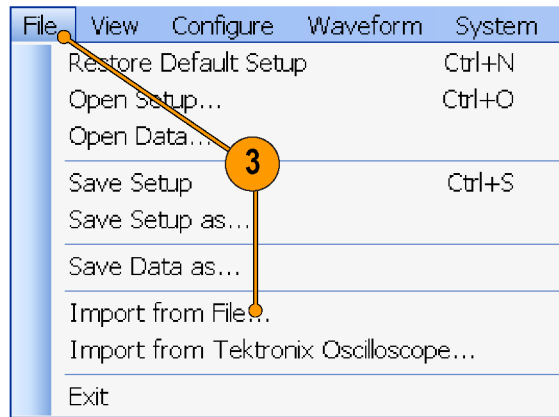
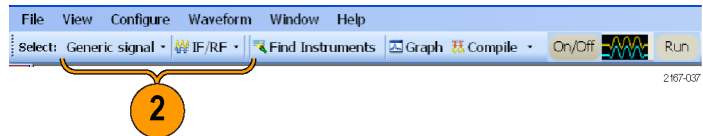
Application Examples: Generic Signal

Replay a Captured Waveform to Test Receivers

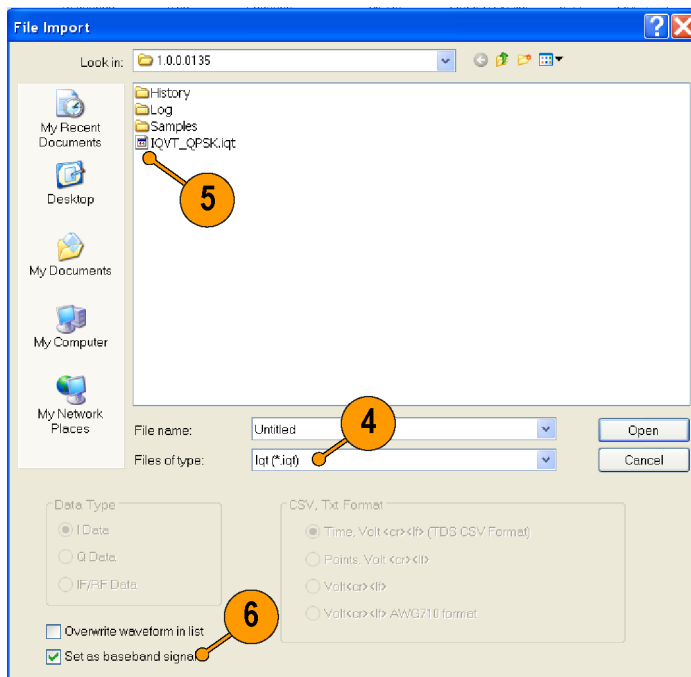
You can capture a real-world signal in a real-time spectrum analyzer and play it back in multiple locations to test your DUTs.

Import an RTSA File

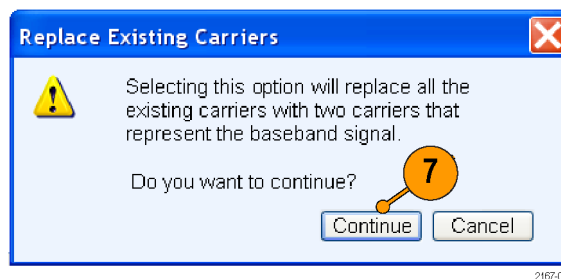
1. Start RFXpress.
2. Ensure that the selected application is set to **Generic signal** and the signal type is **IF/RF**.
3. From the menu, click **File > Import from File**.



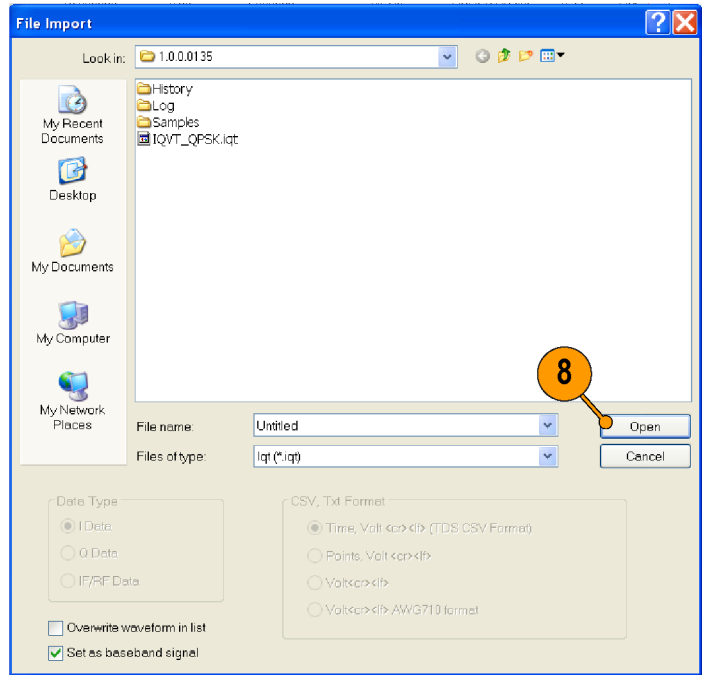
4. Select **iq1** in the **Files of type** field.
5. Select an **iq1** file.
6. Select **Set as baseband signal**.



7. A message appears. Click **Continue**.

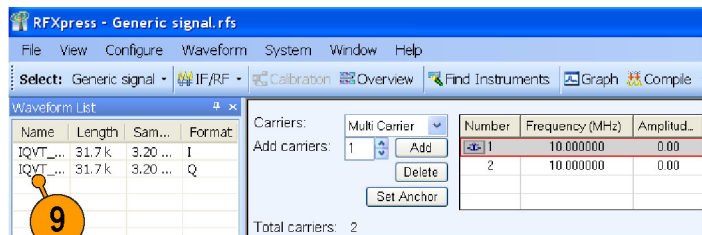


8. Click Open.



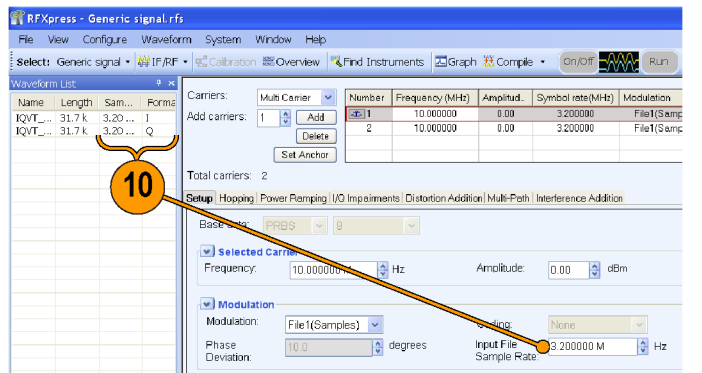
2167-038

9. The waveform list displays the I and Q signals.



2167-038

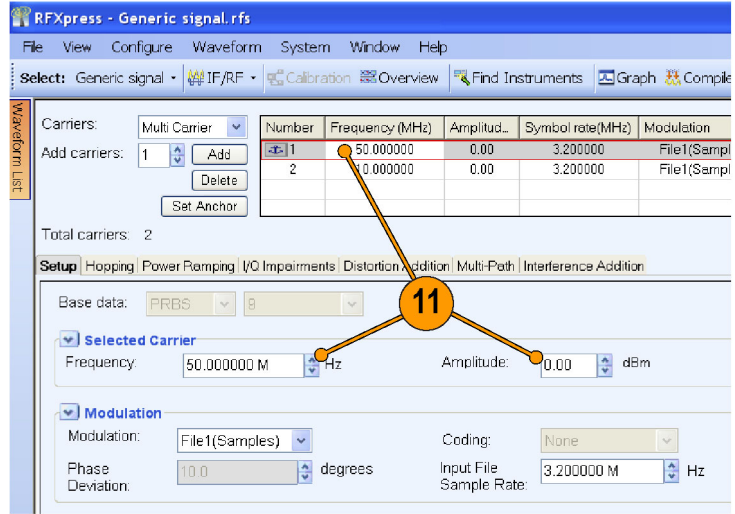
10. Note that the Input File Sample Rate automatically takes the value with which the iqt file was created.



2167-039

11. Select the first carrier and set the following:

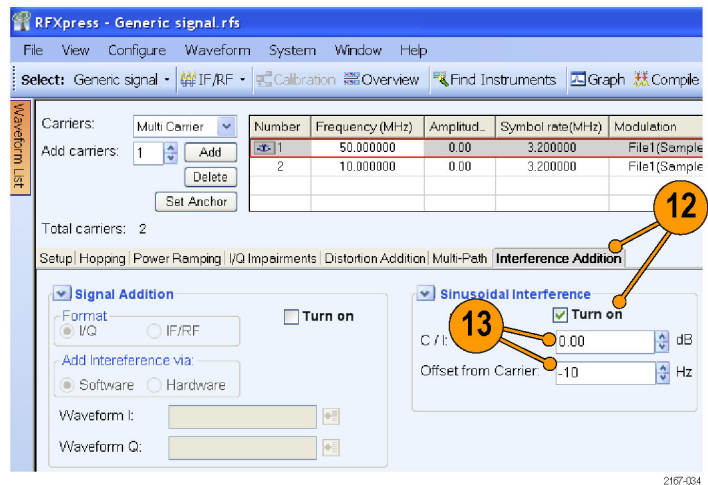
- **Frequency** to 50 M
- **Amplitude** to 0 dBm



12. Click **Interference Addition**. In the Sinusoidal Interference group, select **Turn on**.

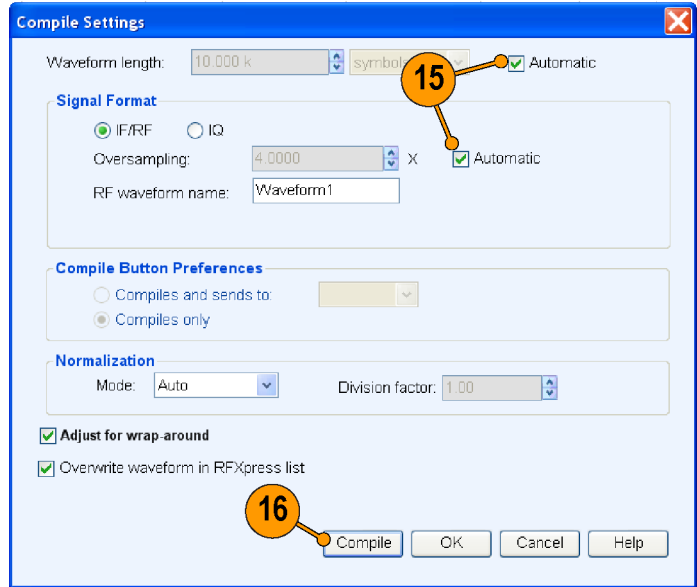
13. Set the following:

- **C/I** to 0 dB.
- **Offset from Carrier** to -10 M.



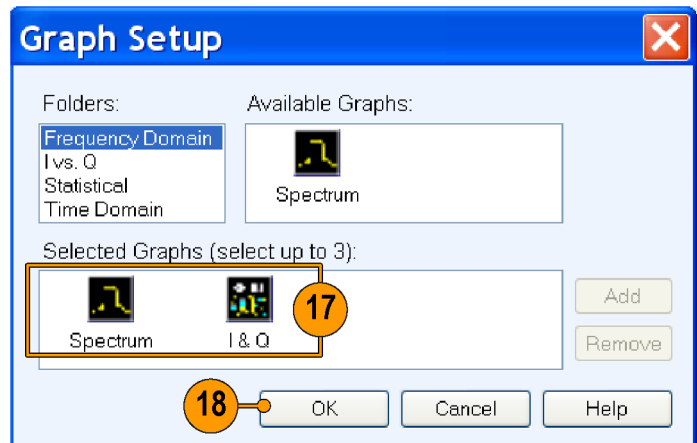
14. Select the second carrier and repeat steps 11 through 13.

15. Click **Compile > Compile Settings**. Ensure that **Automatic** is selected.
16. Click **Compile**. The software uses the default compile settings to generate the waveform.



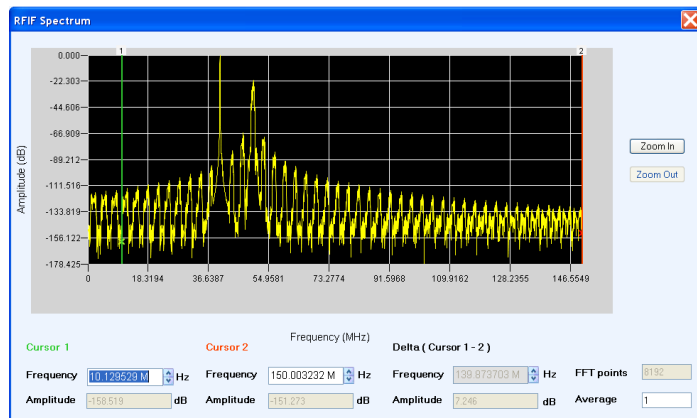
2167-061

17. Add the following graphs in Graph Setup:
 - Frequency Domain: Spectrum
 - Time Domain: I & Q
18. Click **OK**.



2167-061

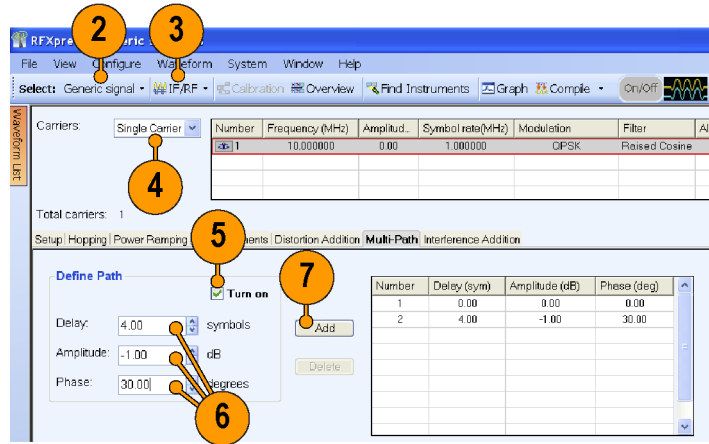
19. The Spectrum graph is as shown.



Simulating a MultiPath Environment for a Generic Signal

You can simulate multipath to test your receiver's response to multipaths.

1. Start RFXpress.
2. From the toolbar, ensure that **Select > Generic signal** is selected.
3. Ensure that the signal type is set to **IF/RF**.
4. Ensure that **Single Carrier** is selected. Keep the default values for the carrier.
5. Click **Multi-Path** and select **Turn on**.



2167-082

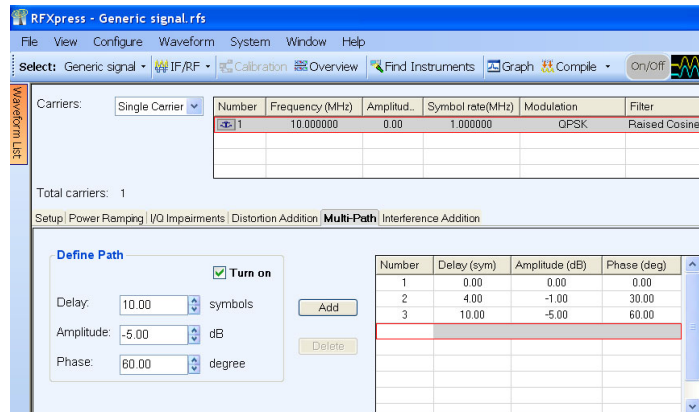
6. Set the following parameters:

- **Delay** to 4 symbols
- **Amplitude** to -1 dB
- **Phase** to 30 degrees

7. Click **Add**.

8. Repeat steps 6 and 7 setting the following parameters:

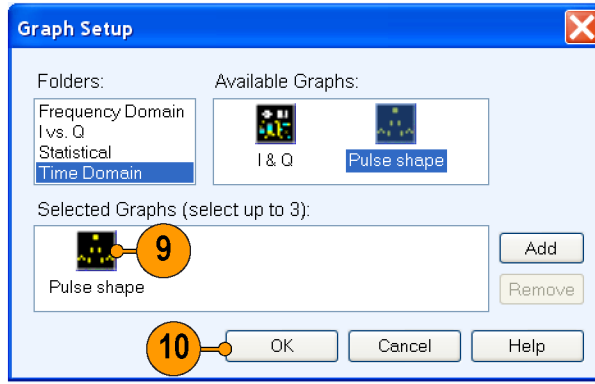
- **Delay** to 10 symbols
- **Amplitude** to -5 dB
- **Phase** to 60 degrees



9. Add the following graph in Graph Setup:

- Time Domain: Pulse shape

10. Click **OK**.



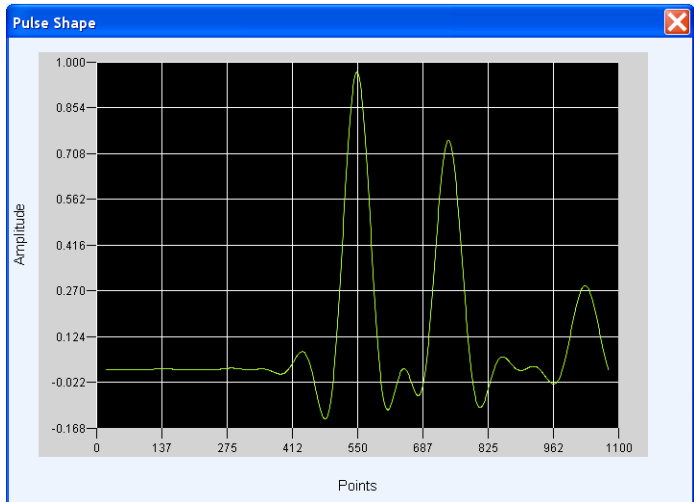
2167-005

11. From the toolbar, click **Compile**.



2167-006

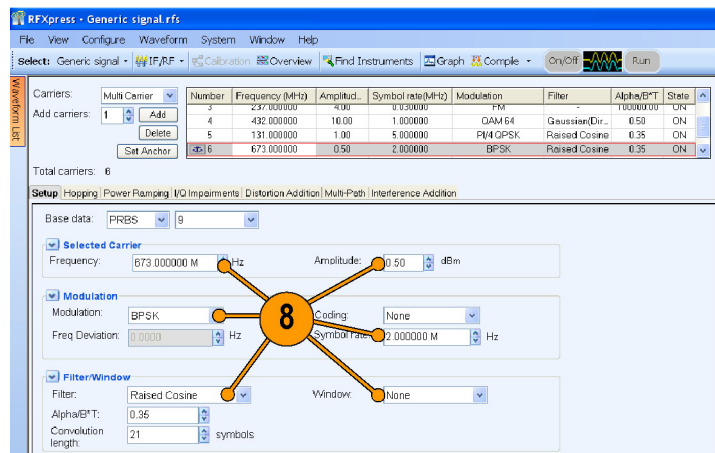
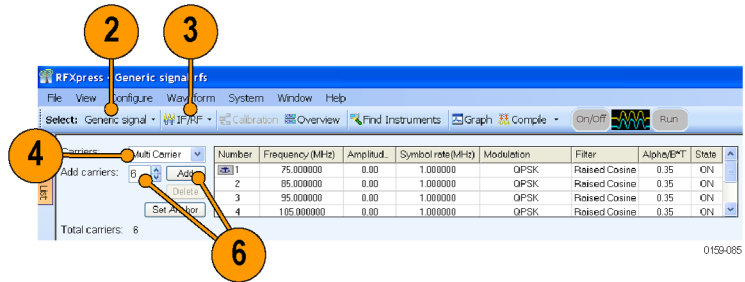
12. The pulse shape is as shown.



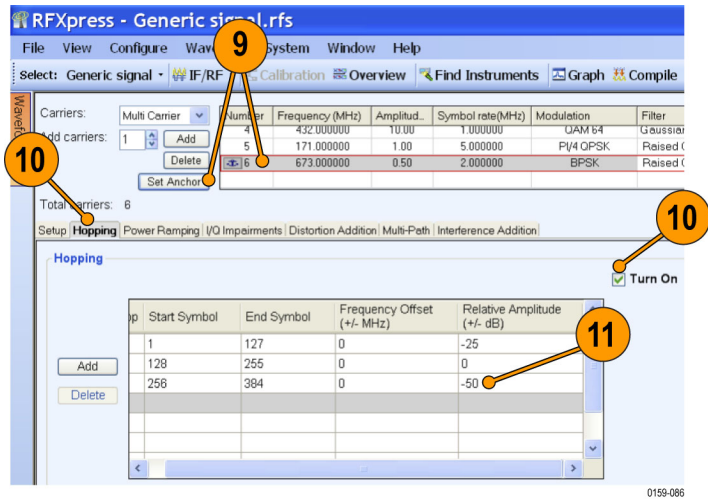
Creating a Hopping Waveform to Test SIGINT Receivers

A SIGINT (Signal Intelligence) receiver assigned to COMINT duty should gather information about all transmissions in the radio band. The specific tasks of a receiver include the ability to detect and analyze the received transmission, estimate frequency and modulation type, extract intelligence (information) and locate the source. This example addresses the challenges in generating a wide range of real-world signals and hopping signals required to test an effective SIGINT receiver.

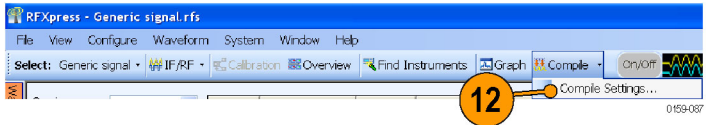
1. Start RFXpress.
2. From the toolbar, click **Select > Generic signal**.
3. Ensure that the signal type is set to **IF/RF**.
4. Select **Carrier** as Multi-Carrier.
5. Select the carrier in the table and click **Delete**.
6. In **Add carriers**, enter 6 and click **Add**.
7. Select the carriers one after another, starting with the first carrier.
8. Enter the values for each carrier as in Table 1. (See page 20.)



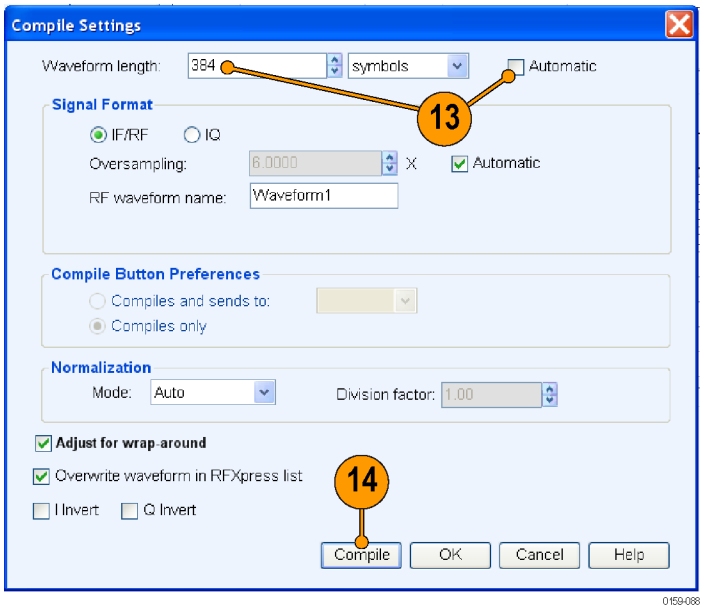
9. Select the sixth carrier and click **Set Anchor**.
10. Click the **Hopping** tab and select **Turn on**.
11. Update the values as shown in Table 2 for each carrier: (See page 21.)



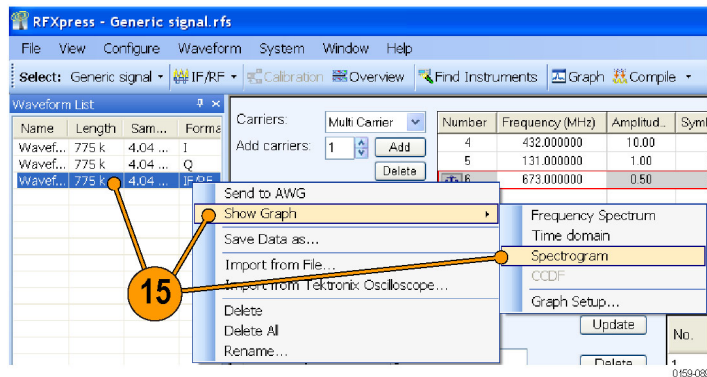
12. From the toolbar, click **Compile > Compile Settings**.



13. Disable **Automatic** and set **Waveform length** to 384 symbols.
14. Click **Compile**.



15. From the waveform list, select an IF/RF waveform. Right-click and select **Show Graph > Spectrogram**.



16. The spectrogram is as shown.

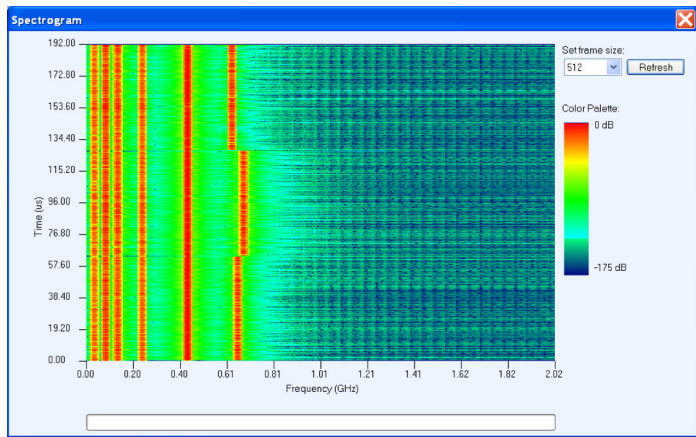


Table 1: Carrier parameters

Signal number	Carrier frequency (MHz)	Amplitude (dBm)	Modulation	Symbol rate (MHz)	Filter	Window
1	31	-6	QPSK	0.5	RC	Blackman
2	79	0	8-PSK	2	Root Raised Cosine	Hamming
3	237	4	FM	30 KHz	-	None
4	432	10	64-QAM	1	Gaussian (Dirac Delta)	Hamming

Table 1: Carrier parameters (cont.)

Signal number	Carrier frequency (MHz)	Amplitude (dBm)	Modulation	Symbol rate (MHz)	Filter	Window
5	131	1	Pi 1/4 QPSK	5	RC	Blackman
6	673	0.5	BPSK	2	RC	None

Table 2: Hopping parameters

Signal number	Start symbol	End symbol	Relative amplitude (dB)	Frequency offset (MHz)
1	1	127	0	-25
2	128	255	0	0
3	256	384	0	-50

Calibrating a Generic Signal

When creating signals for testing wideband receivers, it is important that the test equipment generate signals with flat frequency and linear phase response. As the signal bandwidth is increased, because of the DAC roll-off and bandwidth limitation of the arbitrary waveform generator, the signal created does not have flat frequency and linear phase response. Calibration (predistortion) is applied to signals to correct amplitude and phase distortions.

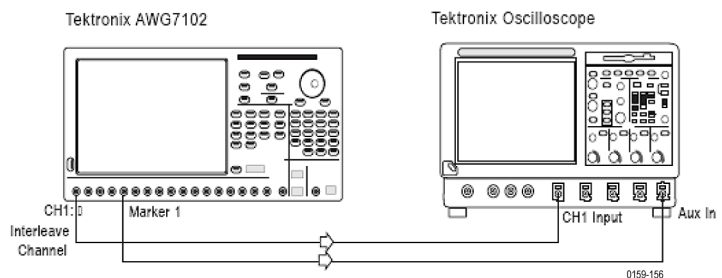
1. Set up the instruments as shown. The instruments must be connected over a LAN.

You will need:

- A Tektronix AWG7102 with Option 06 running RFXpress software.
- A Tektronix DPO oscilloscope to capture the signal. Ensure that the oscilloscope is calibrated.
- Connecting cable.

NOTE. Ensure that the output of the AWG Interleave channel is connected to Channel 1 of the oscilloscope and Marker 1 of the AWG is connected to Aux In of the DPO oscilloscope.

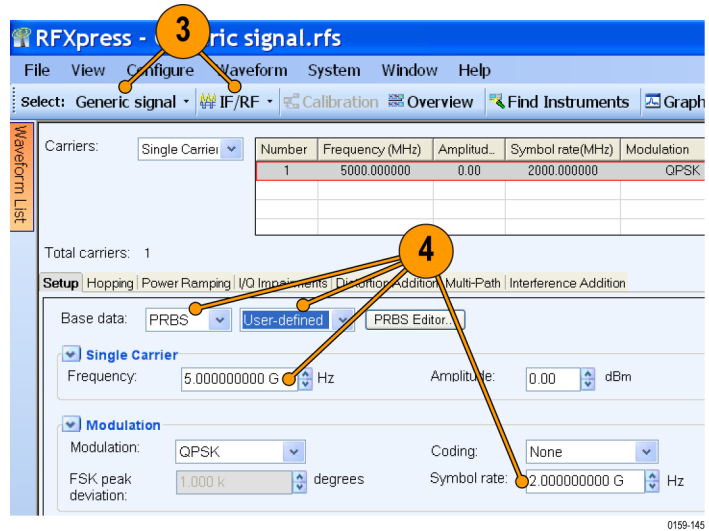
2. Start RFXpress.



3. From the toolbar, click **Select > Generic signal** and signal type as IF/RF.

4. For the carrier, set the following:

- **Base data** to PRBS and User Defined
- **Frequency** to 5 GHz
- **Symbol rate** to 2 GHz



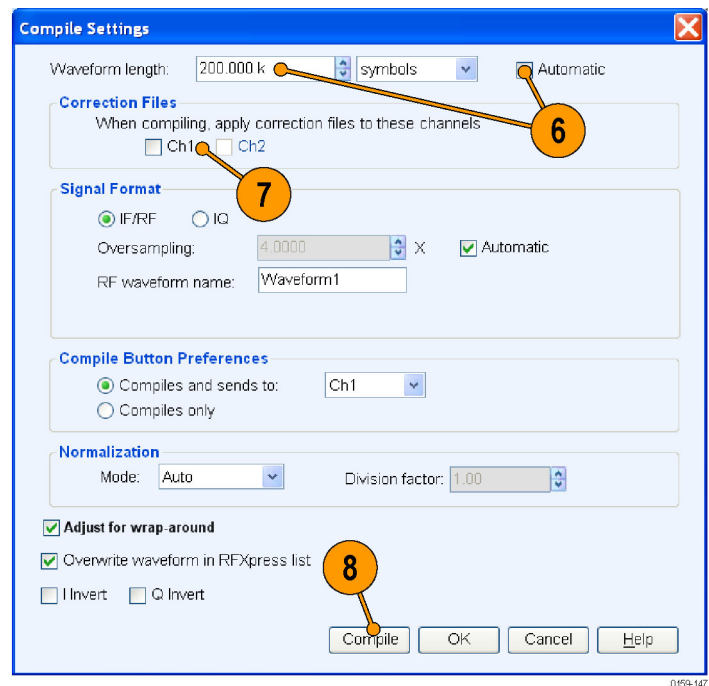
5. From the toolbar, click **Compile > Compile Settings**.



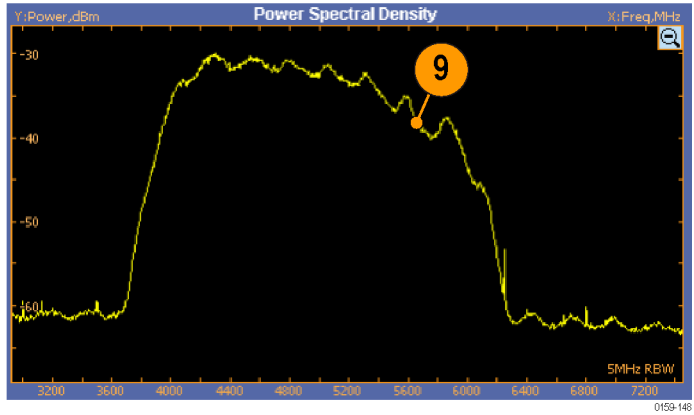
6. Disable **Automatic** and set the **Waveform length** to 200 K symbols.

7. Ensure that **When compiling, apply correction files to these channels** is disabled.

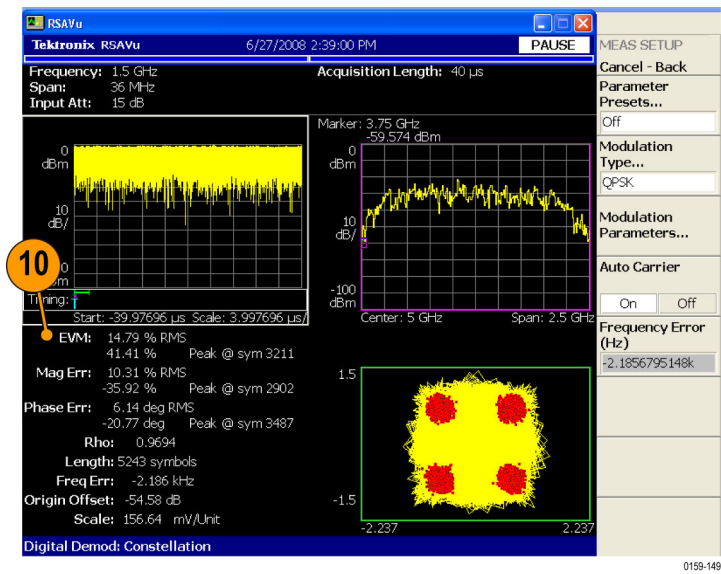
8. Click **Compile**.



- Capture the waveform in the oscilloscope. The signal spectrum is observed using Tektronix Ultra Wideband Spectral Analysis software.

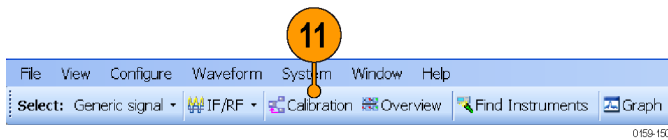


- Note that the EVM value before calibration is 14.65%.



- From the toolbar, click **Calibration**.

NOTE. You will be prompted with a message to compile your setup, if you have not already done so. Click Continue to proceed with calibration.



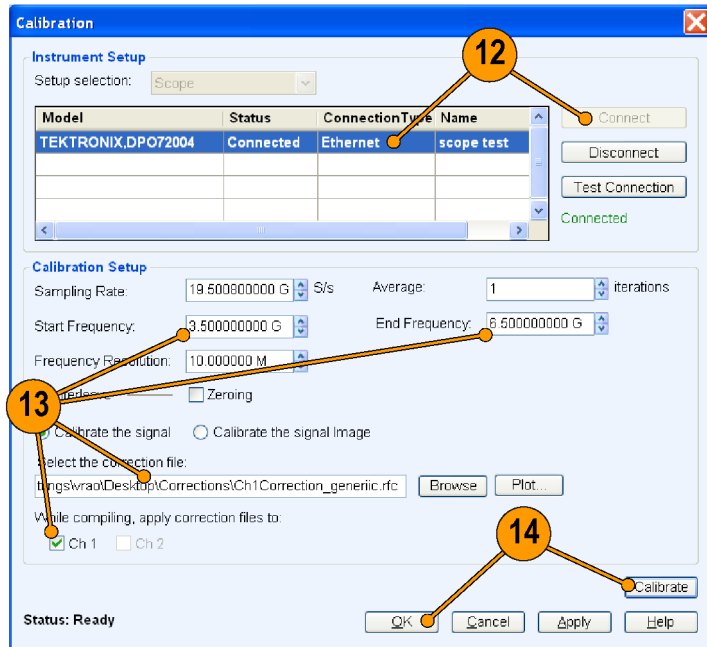
12. The Calibration window displays a table of instruments connected on the network. Select the DPO oscilloscope and click **Connect**. Note that the status changes to Connected.

NOTE. You can click *Test Connection* to test the status of the instrument.

13. Set the following:

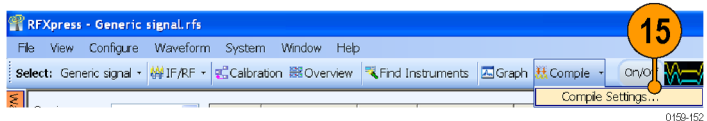
- **Start Frequency** to 3.5 GHz
- **End Frequency** to 6.5 GHz
- **Select the correction file** name to generate the correction file
- **Select Ch 1**

14. Click **Calibrate**. Follow the prompt and continue. After calibration, click **OK**.



0159-151

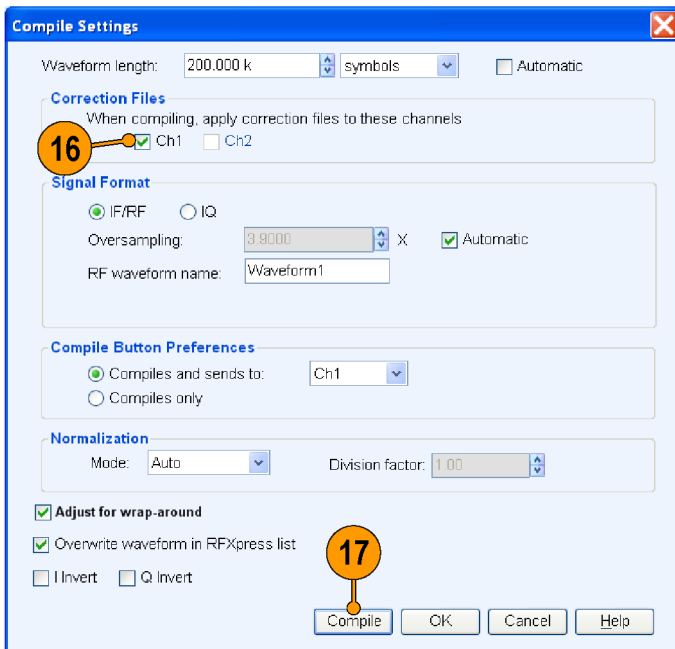
15. From the toolbar, click **Compile > Compile Settings**.



0159-152

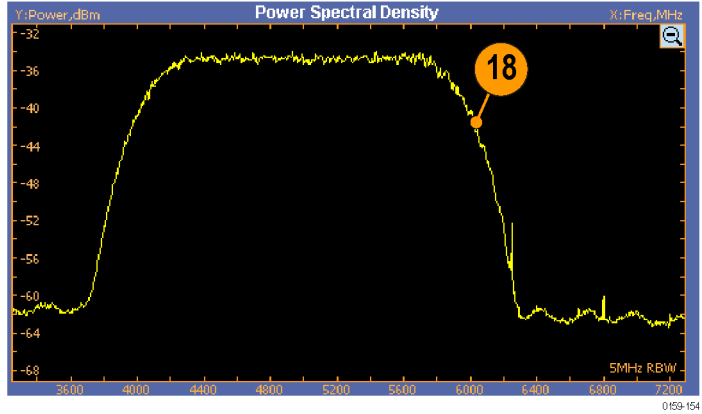
16. Ensure that the correction file created during calibration is applied to Ch1.

17. Click **Compile**.

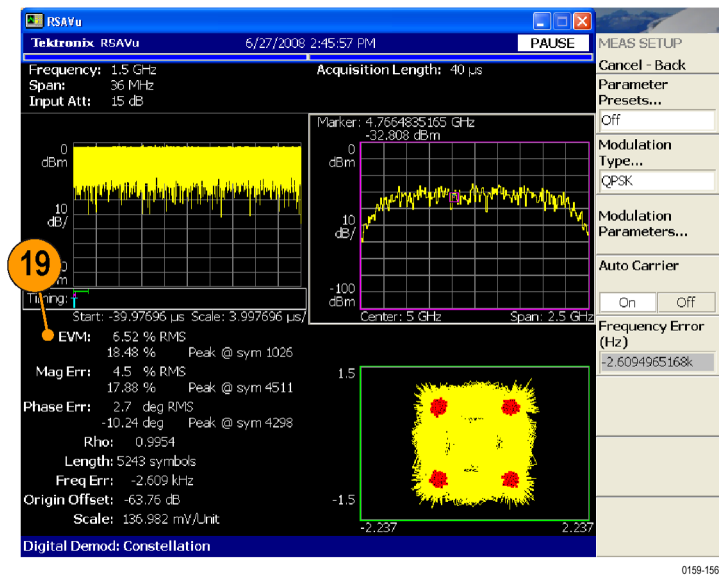


0159-153

18. Capture the calibrated waveform in the oscilloscope. The signal spectrum is observed using Tektronix Ultra Wideband Spectral Analysis software.



19. Note that the EVM value after calibration is 6.52%.

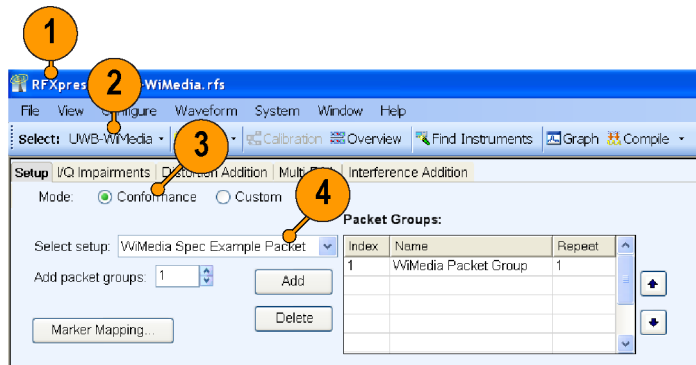


Application Examples: UWB-WiMedia

Creating a UWB Waveform to Test Your Receivers

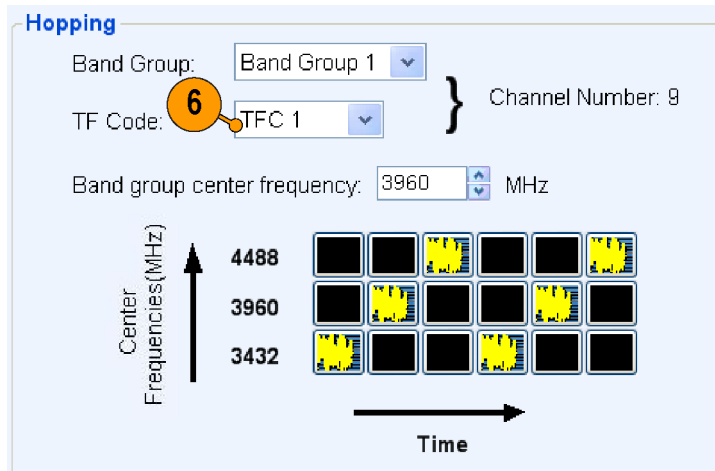
You can create an ideal waveform and use it to test whether your receivers are operating within the WiMedia specifications.

1. Start RFXpress.
2. From the toolbar, click **Select > UWB-WiMedia**.
3. By default, **Conformance** is selected.
4. From the Select Setup, select **WiMedia Spec Example Packet**.



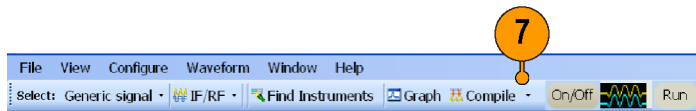
2167-016

5. The **WiMedia Spec Example Packet** settings (according to Annex A of the WiMedia specification document) are displayed in the fields in each tab.
6. Confirm the **Hopping Pattern** for TF Code 1.



2167-017

7. Click **Compile**.

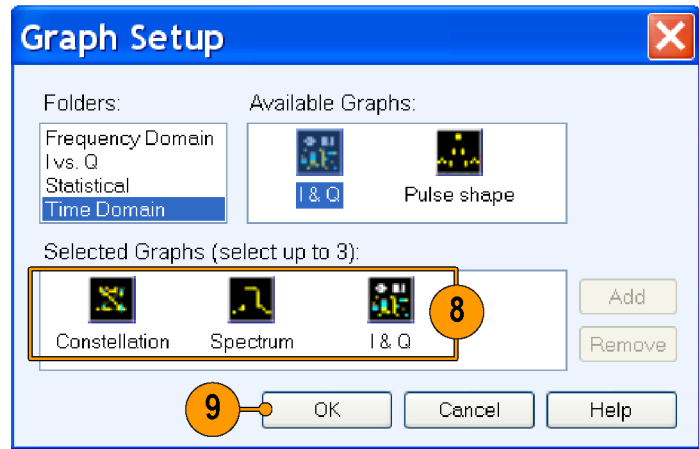


2167-018

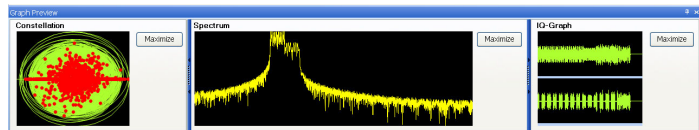
8. Add the following graphs in Graph Setup:

- Frequency Domain: Spectrum
- I Vs Q: Constellation
- Time Domain: I & Q

9. Click **OK**.



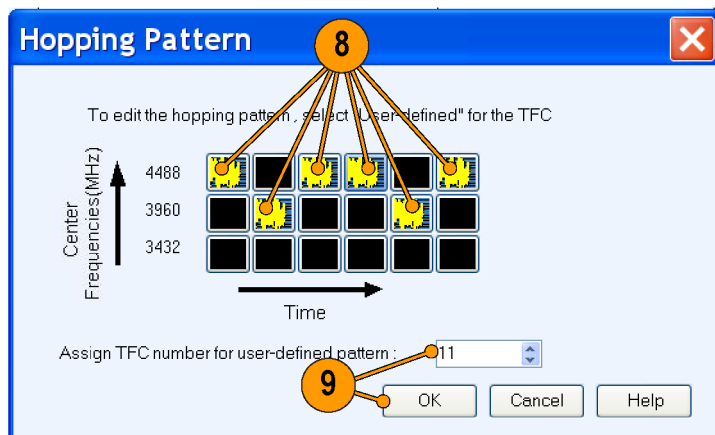
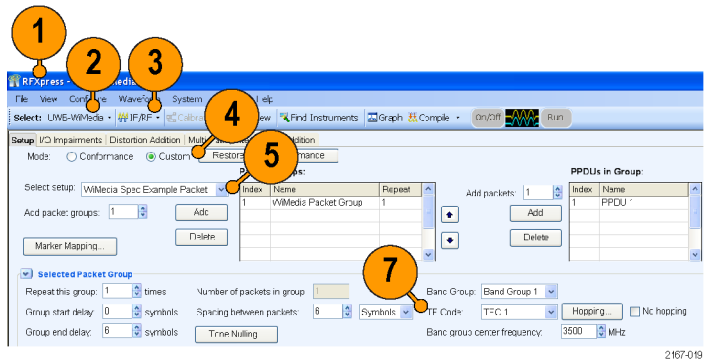
10. The graphs are as shown.



Characterize Receiver Design for Receiver Verification and Stress Test

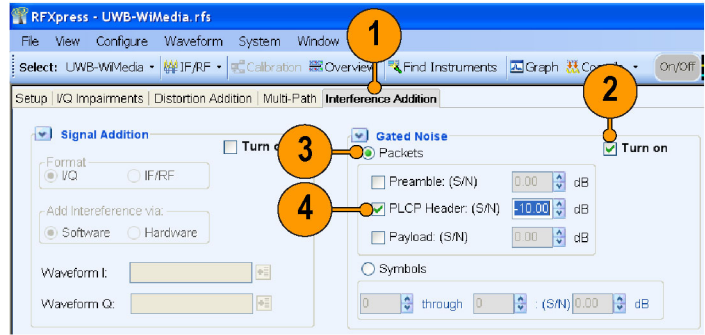
You can generate a signal and use it to test your receiver at conditions just outside the boundary values specified by the WiMedia standard.

1. Start RFXpress.
2. From the toolbar, click **Select > UWB-WiMedia**.
3. Set the signal type to **IF/RF**.
4. Select **Custom**.
5. From the Select Setup, select **WiMedia Spec Example Packet**.
6. The default values for the selected setup and packet are shown graphically.
7. For the selected packet group, set **TF Code** to User Defined.
8. To define a hopping pattern: In each column, click the frequency that you want to use. Set the hopping pattern to: 323323.
9. Assign a TFC number for the pattern that you defined and click **OK**.

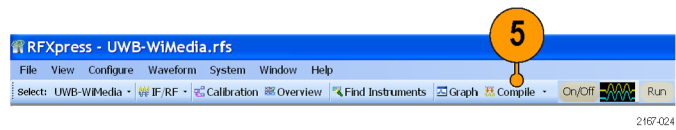


Adding Interference

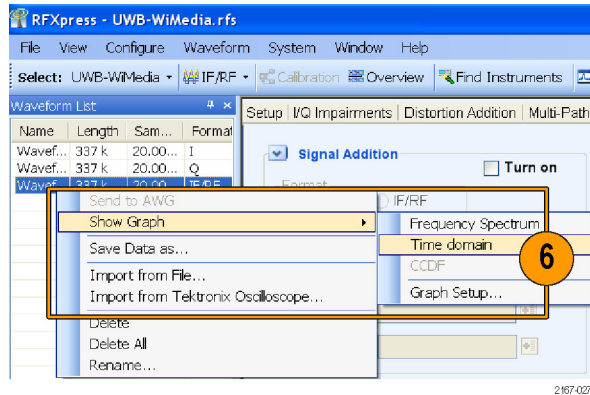
1. Click **Interference Addition**.
2. In the Gated Noise group, select **Turn on**.
3. Click **Packets**.
4. Click **PLCP Header** and set it to -10.0 .



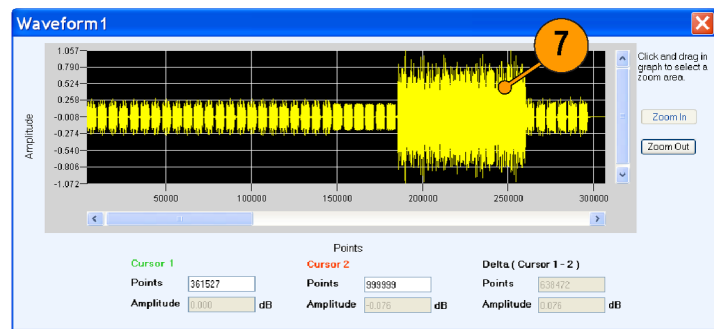
5. From the toolbar, click **Compile**.



6. In the Waveform List, select the IF/RF waveform and right-click. Select **Show Graph > Time domain**.



7. Observe the noise in the header. The noise of 10 dB is greater than the signal.



Using Calibration to Increase the Flatness of a UWB Signal Path to the DUT

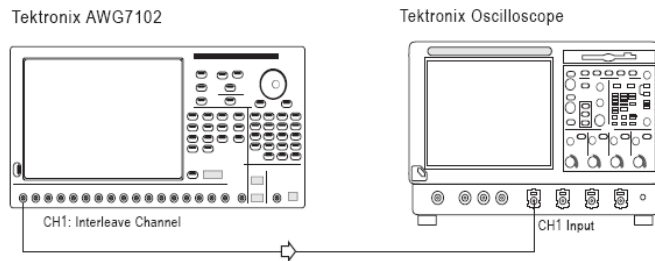
The calibration feature allows you to generate correction files that you can use during compilation to predistort the signal, thereby increasing the flatness of the signal.

1. Set up the instruments as shown. The instruments must be connected over a LAN.

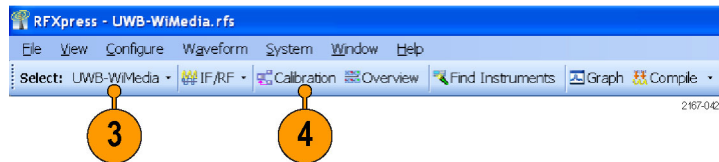
You will need:

- A Tektronix AWG7102 with Option 06 running RFXpress software.
- A Tektronix DPO70804 oscilloscope to capture the signal. Ensure that the oscilloscope is calibrated.
- Connecting cable.

NOTE. Ensure that the output of the AWG Interleave channel is connected to Channel 1 of the oscilloscope.



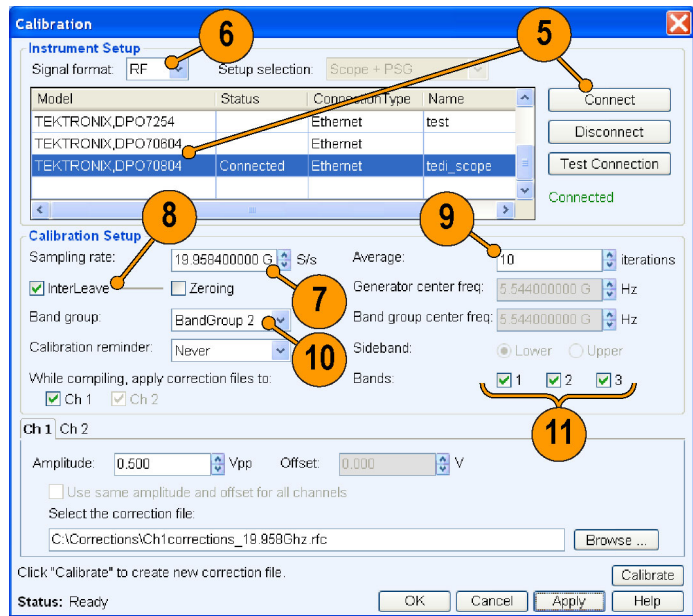
2. Start RFXpress.
3. From the toolbar, click **Select > UWB-WiMedia**.
4. From the toolbar, click **Calibration**.



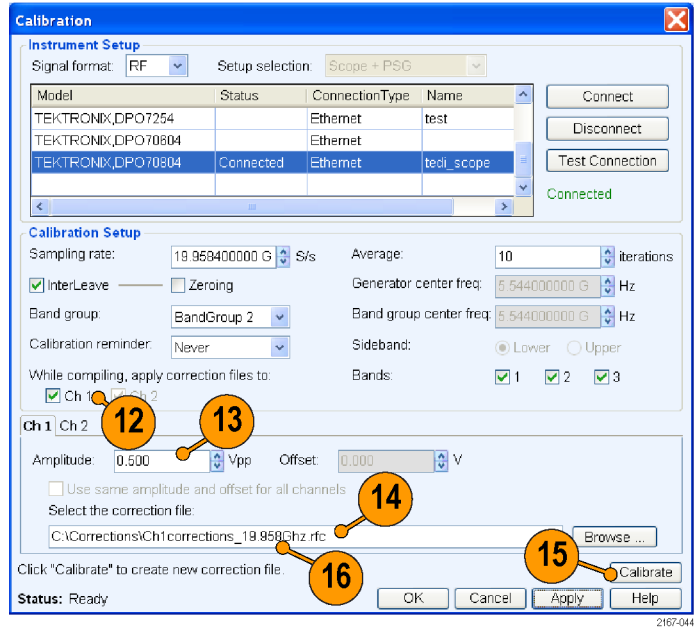
5. The Calibration window displays a table of instruments connected on the network. Select the DPO70804 oscilloscope and click **Connect**. Note that the status changes to Connected.

NOTE. You can click **Test Connection** to test the status of the instrument.

6. Set the signal type to **RF**.
7. Set the **Sampling Rate** to 19.996576 GS/s.
8. Select **InterLeave**.
9. Set the **Average** to 10.
10. Set the **Band group** to 2.
11. Select **Bands**: 1, 2, and 3.

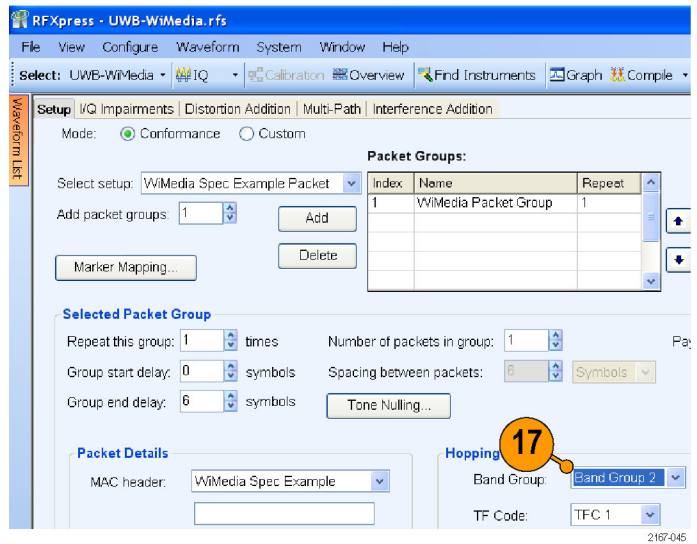


12. Set **When compiling, apply correction files to** Ch1.
13. Set the **Amplitude** for Ch 1 to 0.5 Vpp.
14. Set the path for **Select the correction file**.
15. Click **Calibrate** to create the correction file (.rfc). The calibration status is continually updated.
16. Confirm that the correction file that was just generated is selected.



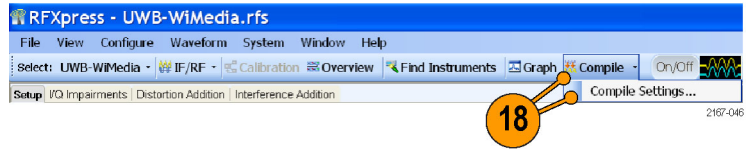
2167-044

17. Set **Band Group** to BandGroup 2.



2167-045

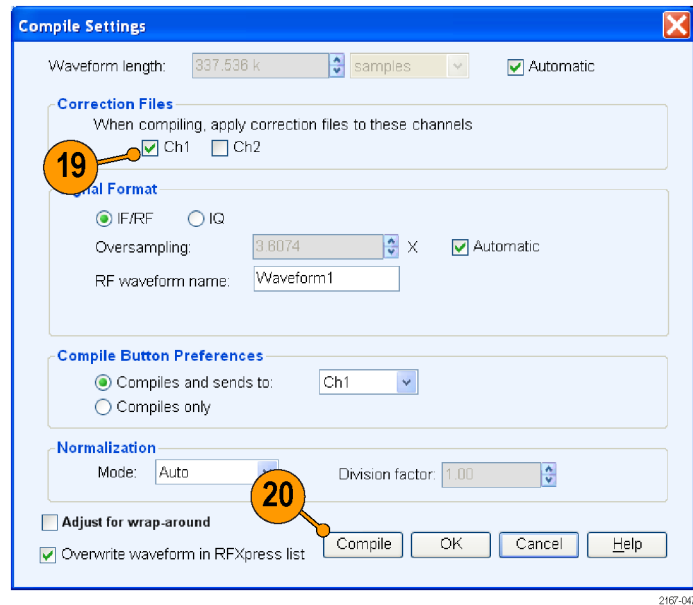
- From the toolbar, click **Compile > Compile Settings**.



- Ensure that the correction file created during calibration is applied to Ch1.

NOTE. *Oversampling is calculated automatically to achieve a sampling rate of 19.996576 GS/s.*

- Click **Compile**.

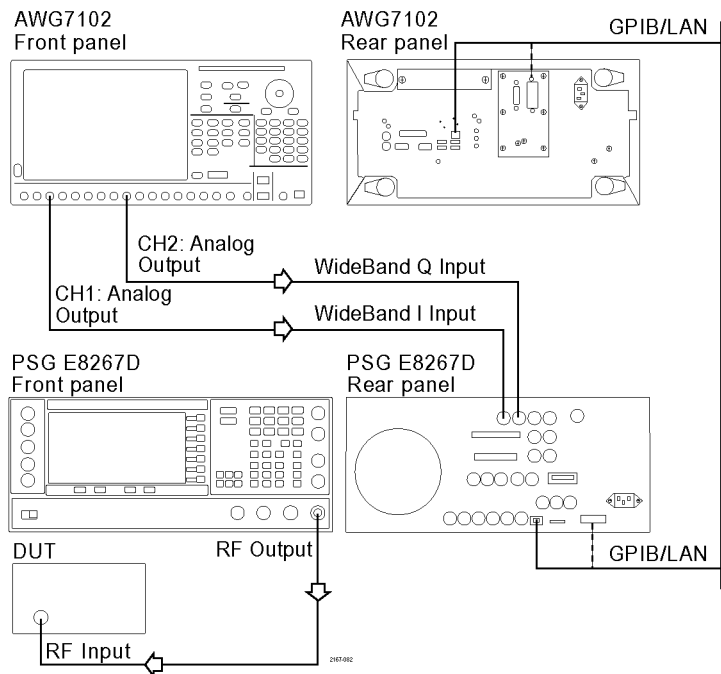


Creating a Band Group 6 Signal Using an External IQ Modulator

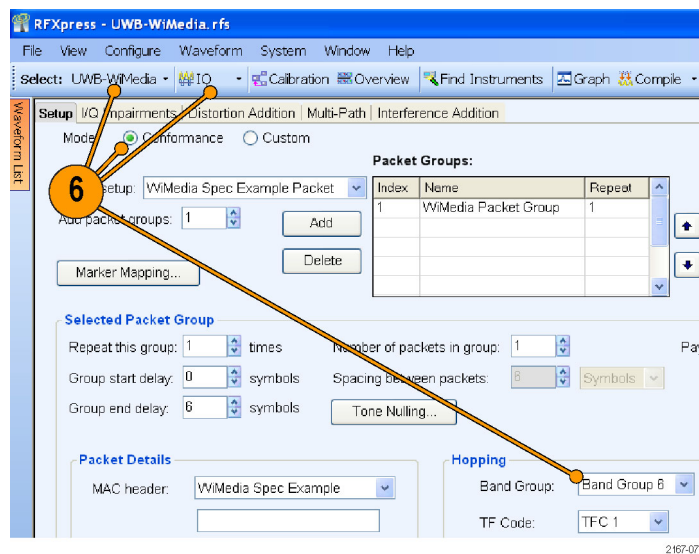
You can create a Band Group 6 WiMedia signal using an AWG7102 and an external IQ modulator like the Agilent PSG®. The AWG7102 is used to generate a hopping baseband signal which will be fed to PSG to modulate it to the desired Band Group 6 center frequency of 8184 MHz. The signal would have to be calibrated to adjust the channel mismatches. Channel mismatches result in images and carrier leakage. Carrier leakage is caused by the offset mismatch between the channels and images by the amplitude and skew mismatches. To eliminate images you must calibrate the signal for all the tones. In this application example, an extreme tone from the center frequency is taken and calibrated.

1. You will need the following equipment, with each piece calibrated:
 - A Tektronix AWG7102 with Option 06 running RFXpress software
 - A Tektronix DSA72004 oscilloscope to capture the signal. The Tektronix Ultra Wideband Spectral Analysis software must be loaded and running on the oscilloscope
 - An Agilent Performance Signal Generator PSG® E8267D with Option 015
 - A Tektronix RSA6114A Real Time Spectrum Analyzer
 - Matched pair connecting cables to connect between the PSG E8267D and the AWG7102

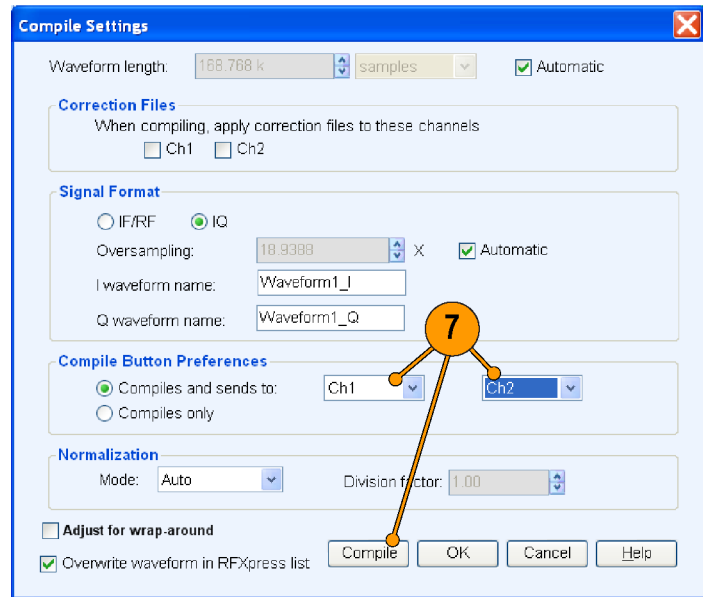
2. Connect the equipment as shown. Either the DSA72004 oscilloscope or the RSA6114A Real Time Spectrum Analyzer can be used as the DUT.



3. On the PSG E8267D, do the following:
 - Set **I/Q** to On.
 - Set **I/Q Path** to Wide.
 - Select **IQ Calibration**. Set **Calibration Type** to Full and execute calibration.
 - Set **Frequency** to 8184 MHz (for BandGroup 6) and **Amplitude** to 0 dBm.
4. Connect the RF output of the PSG E8267D to the oscilloscope (DUT).
5. On the AWG7102, start RFXpress.
6. Set the following:
 - Application to **UWB-WiMedia**
 - Signal type to **IQ**
 - Mode to **Conformance**
 - **Band Group** to 6



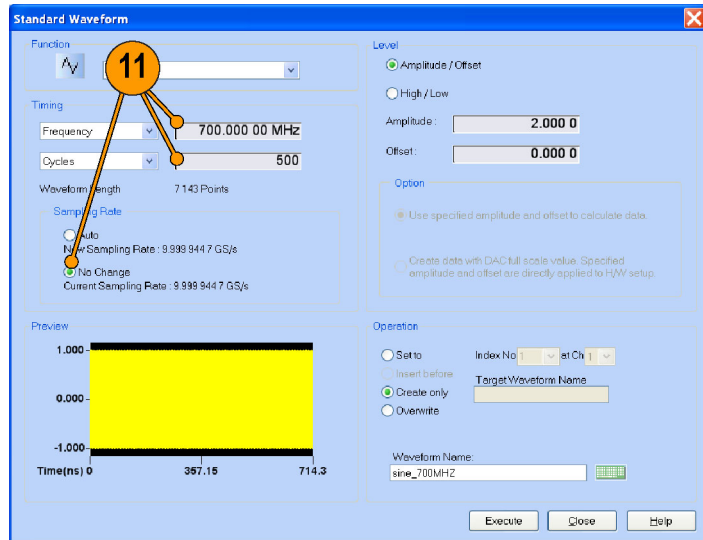
7. Click **Compile > Compile Setting**. Ensure that **Compiles and Sends to** is set to Ch1 and Ch2. Click **Compile** to generate the signal.



2167-072

8. On the PSG E8267D, do the following:
 - Set **Modulation** to On.
 - Set **RF** to On.
9. The signal is sent to oscilloscope (DUT); capture and demodulate it using the Tektronix Ultra Wideband Spectral Analysis software. If the software is unable to decode the signal, go to step 10 to proceed with calibrating the signal.
10. Disconnect the oscilloscope and connect the RF output of the PSG E8267D to the RSA6114A (DUT).

11. On the AWG7102, using a standard waveform, generate a sine wave with a **Frequency** of 700 MHz, **Cycle** of 500, and the sampling rate set to **No Change**.



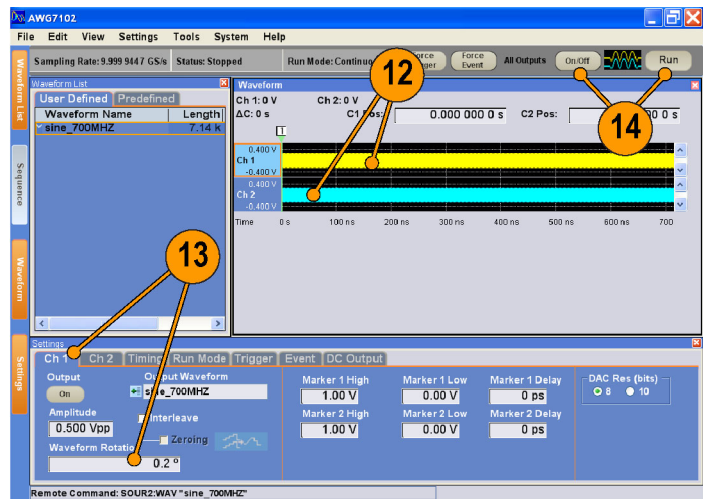
2167-073

12. Drag and drop the sine wave (signal) into Ch 1 and Ch 2.

13. Click Ch 1 and set **Waveform Rotation** to 0.18 degrees. Leave Ch2 unchanged.

NOTE. On the AWG7102, the waveform rotation value will be shown as 0.2°.

14. Click **On/Off**. Click **Run**.

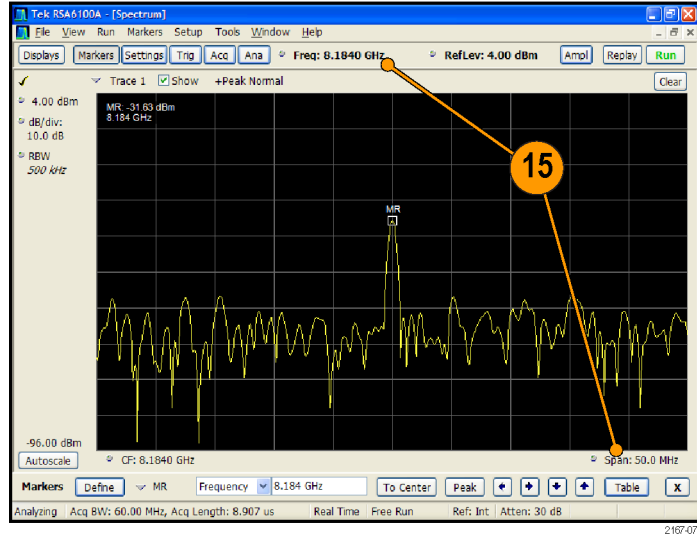


2167-074

15. On the RSA6114A, do the following:

- Set **Frequency** to 8184 MHz.
- Set **Span** to 50 MHz.

Observe whether there is a carrier leakage at 8184 MHz. If you find a frequency component at 8184 MHz, proceed with the calibration or else go to step 18.

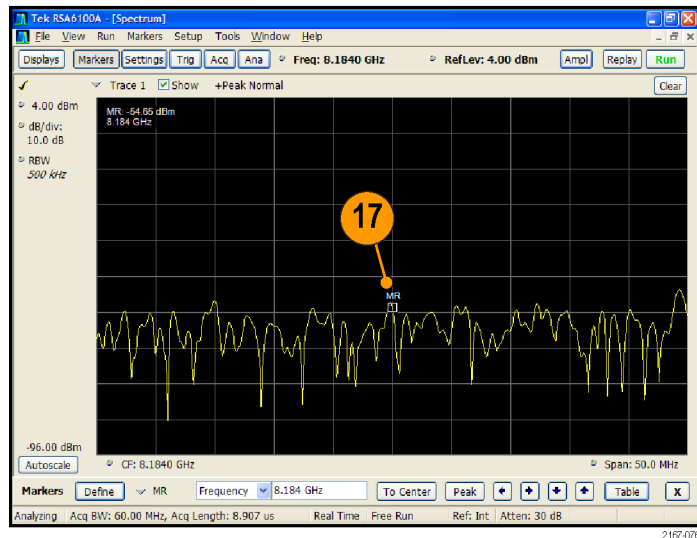


16. On the PSG E8267D, do the following:

- Set **I/Q Adjustments** to On.
- Adjust the **I Offset** and **Q Offset** until the carrier leakage reduces to the noise floor.

You may have to adjust the values iteratively.

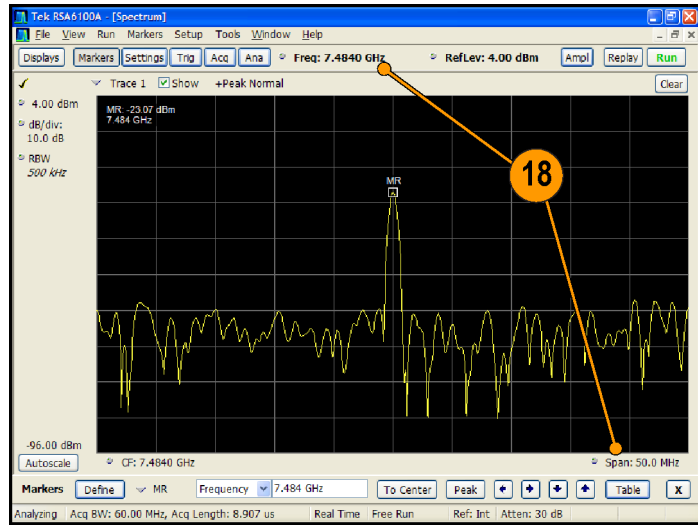
17. Observe the change in the signal on the RSA6114A.



18. On the RSA6114A, do the following:

- Set **Center Frequency** to 8184–700 MHz (that is 7484 MHz).
- Set **Span** to 50 MHz.

Observe whether there is an image at a frequency of 7484 MHz. If there is an image, proceed to calibrate the signal. If there is no image, proceed to step 21.

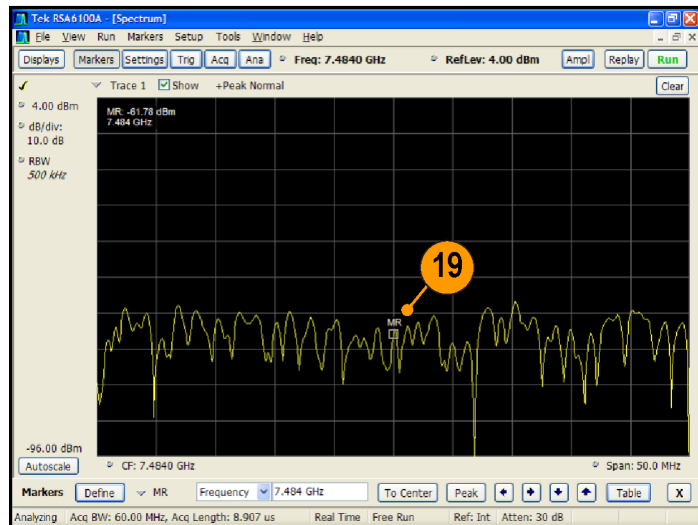


2167-077

19. On the AWG7102, adjust the **Amplitudes** and **Channel Skews** to reduce the image to the noise floor.

You may have to adjust the values iteratively. Observe the change in the signal on the RSA6114A.

20. Make a note of the amplitudes and skew values of Ch 1 and Ch 2.



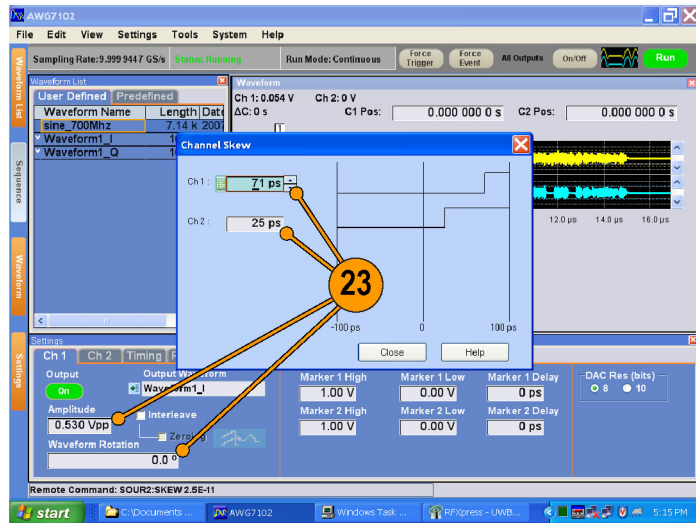
2167-078

21. Go to RFXpress and click **Compile**.



2167-079

22. Connect the RF output of the PSG E8267D to the oscilloscope (DUT).
23. On the AWG7102, set the values noted in step 20:
 - Amplitudes of Ch 1 and Ch 2.
 - Skew values of Ch 1 and Ch 2.
 - Waveform rotation to 0.
24. Observe that the signal is decoded on the oscilloscope.

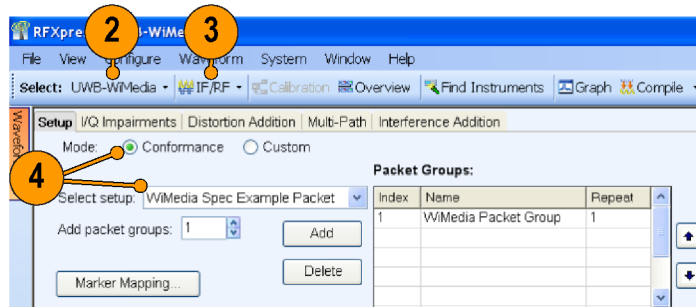


2167-081

Introducing Real-World Impairments in a UWB Signal

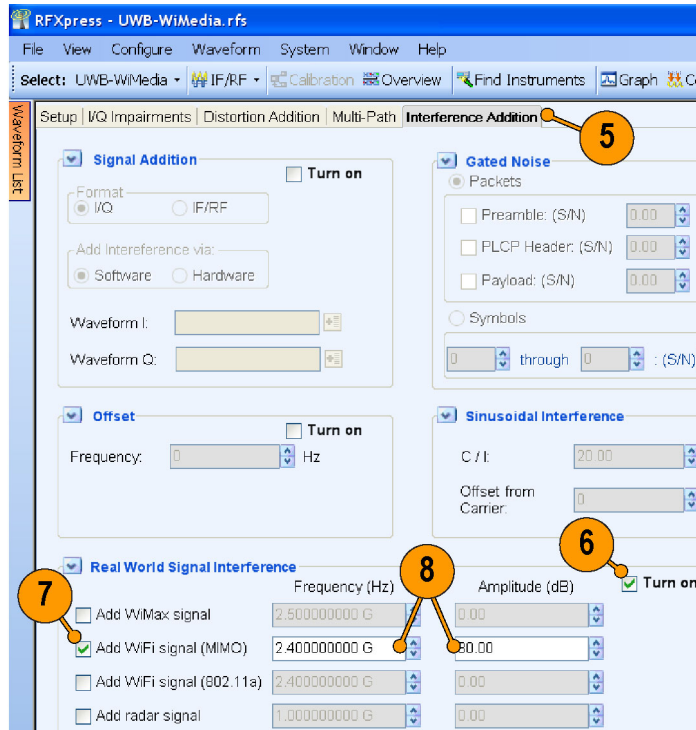
You can introduce real-world impairments in a UWB signal to test your receiver in a simulated real-world environment.

1. Start RFXpress.
2. From the toolbar, click **Select > UWB-WiMedia**.
3. Ensure that the signal type is set to **IF/RF**.
4. Ensure that the **Mode** is Conformance and the **Selected setup** is WiMedia Spec Example Packet. Keep the default values for the selected setup.

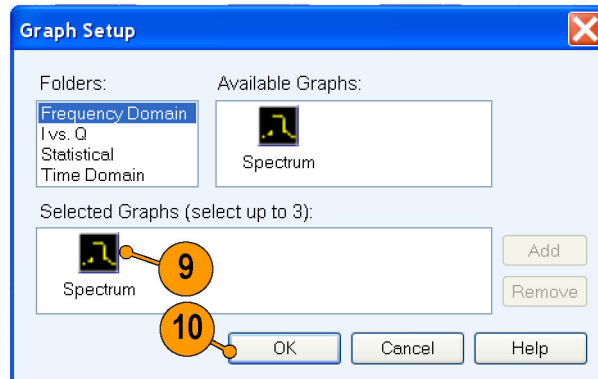


2167-087

5. Click **Interference Addition**.
6. In the Real World Signal Interference group box, click **Turn on**.
7. Click **Add WiFi signal (MIMO)**.
8. Set the following parameters:
 - **Frequency** to 2.4 G Hz (default).
 - **Amplitude** to 30 dB.



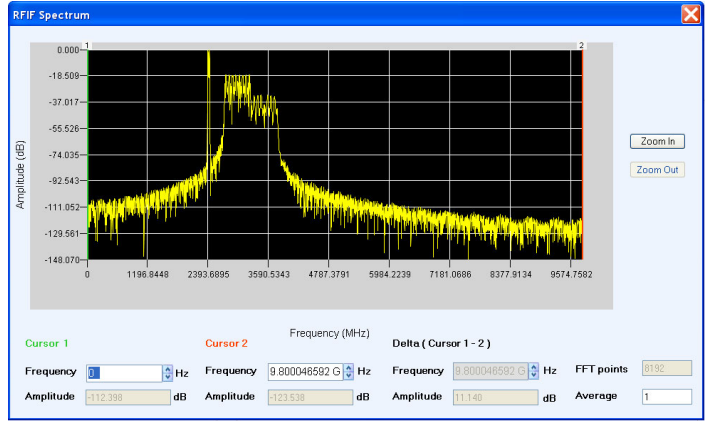
9. Add the following graph in Graph Setup:
 - **Frequency Domain: Spectrum**
10. Click **OK**.



11. From the toolbar, click **Compile**.



12. The spectrum is as shown.

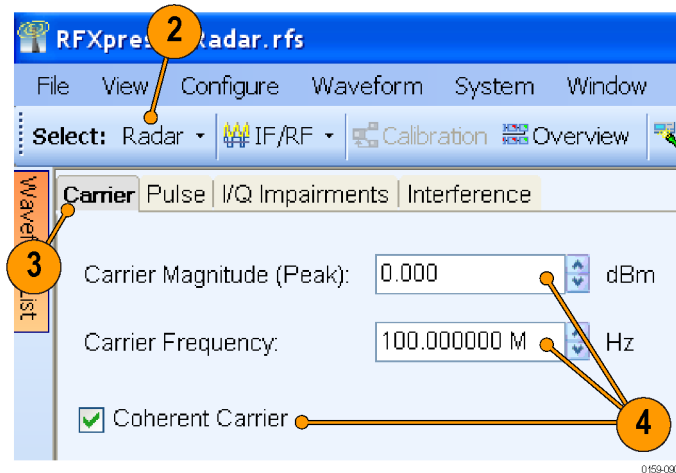


Application Examples: Radar

Generating an LFM Waveform with Coherent Carrier for Pulse Compression Radar

You can use the Radar plug-in to generate an LFM waveform with coherent carrier for pulse compression radar.

1. Start RFXpress.
2. From the toolbar, click **Select > Radar**.
3. Click the **Carrier** tab.
4. Keep the following defaults:
 - **Carrier Magnitude (Peak)** to 0 dBm.
 - **Carrier Frequency** to 100 MHz.
 - **Coherent Carrier** is selected.



5. Select the **Pulse** tab and select the **Pulse Envelope** tab.

6. Set the following:

- **Pulse Shape** to Rectangular (default).
- **Start Time** to 0 ps (default).
- **Pulse Width** to 10 μ s at 100%.
- **Off Time** to 198 μ s.

NOTE. The PRF and PRI values are calculated and automatically updated based on the parameters that you just set. In this case, the PRF is 4.807 KHz and the PRI (in the table) is 0.2080 ms.

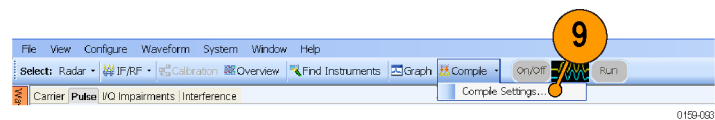
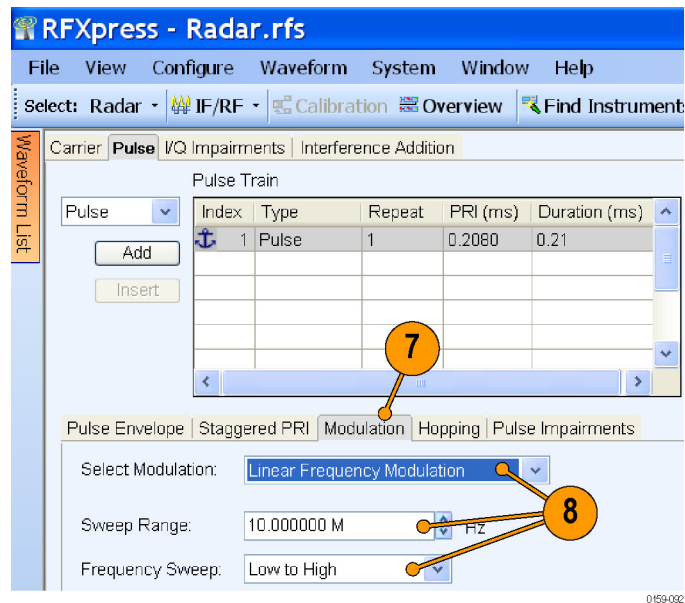
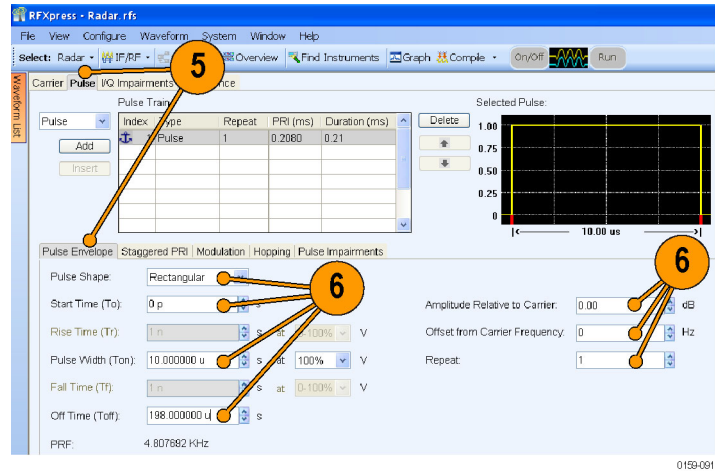
- **Amplitude Relative to Carrier** to 0 dB (default).
- **Offset from Carrier Frequency** to 0 Hz (default).
- **Repeat** to 1 (default).

7. Click the **Modulation** tab.

8. Set the following:

- **Select Modulation** to Linear Frequency Modulation.
- **Sweep Range** to 10 MHz.
- **Frequency Sweep** to Low to High.

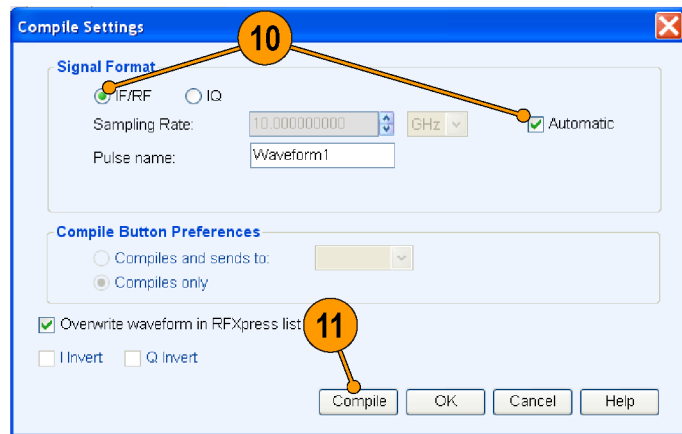
9. From the toolbar, click **Compile Settings**.



10. Ensure the following:

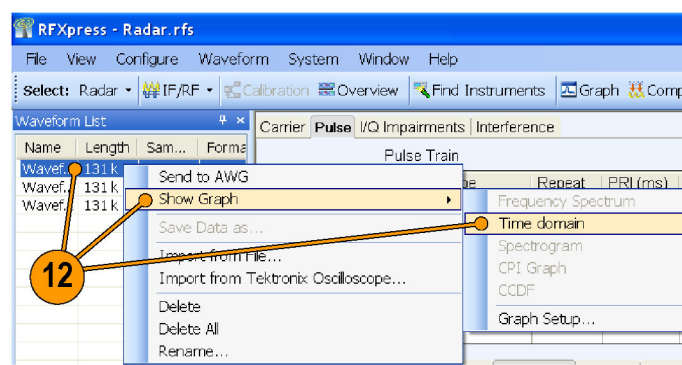
- **Signal Format** is IF/RF.
- **Automatic** is selected.

11. Click **Compile**.



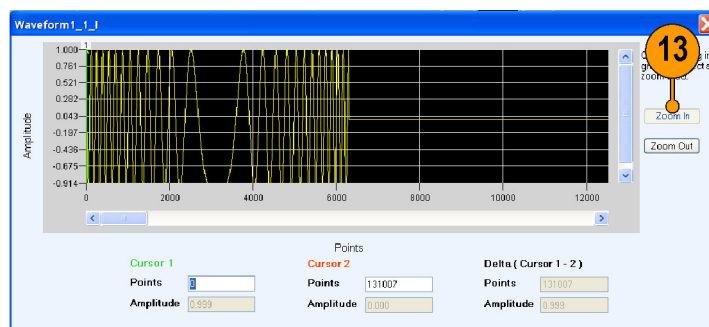
0159-107

12. The compiled pulse is displayed in the Waveform List. In the Waveform List, select the I signal and right-click. Select **Show Graph > Time domain** to display the graph of the pulse.



0159-065

13. Click **Zoom In** and select an area to zoom.



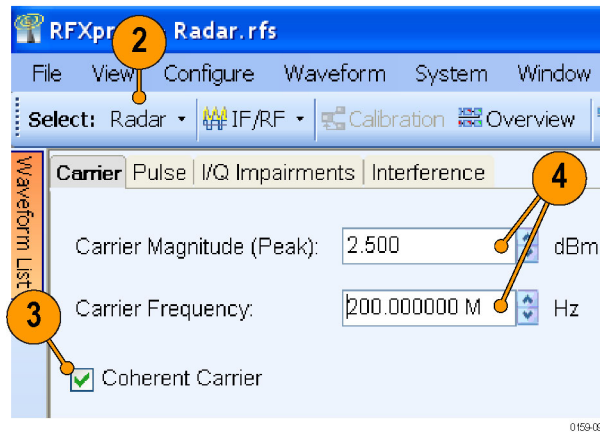
0159-036

Generating a Hopping Radar Waveform: Creating a Pulse-to-Pulse Frequency Hopping Signal

A pulse-to-pulse hopping radar signals are also known as frequency agile waveforms. Pulse-to-pulse hopping is used in electronic counter measures by rapidly switching the frequency of the transmitted energy and receiving only that frequency during the receiving time window.

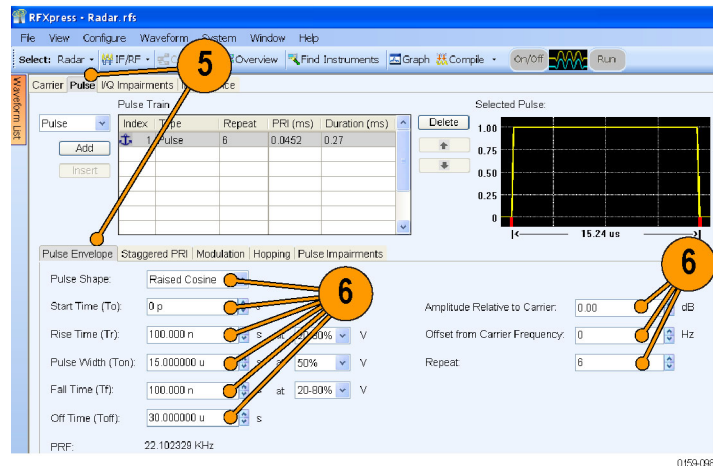
1. Start RFXpress.
2. From the toolbar, click **Select > Radar**.
3. In the **Carrier** tab, ensure that **Coherent Carrier** is selected (default).
4. Set the following:

- **Carrier Magnitude (Peak)** to 2.5 dBm.
- **Carrier Frequency** to 200 MHz.



5. Select the **Pulse** tab and select the **Pulse Envelope** tab.
6. Set the following:

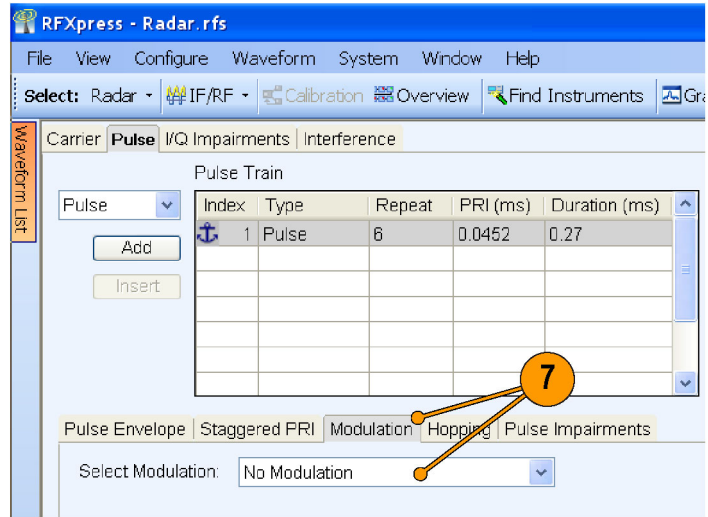
- **Pulse Shape** to Raised Cosine.
- **Start Time** to 0 ps (default).
- **Rise Time** to 0.1 μ s at 20–80%.
- **Pulse Width** to 15 μ s at 50%.
- **Fall Time** to 0.1 μ s at 20–80%.
- **Off Time** to 30 μ s.



NOTE. The PRF and PRI values are calculated and automatically updated based on the parameters that you just set. In this case, the PRF is 22.102 KHz and the PRI (in the table) is 0.0452 ms.

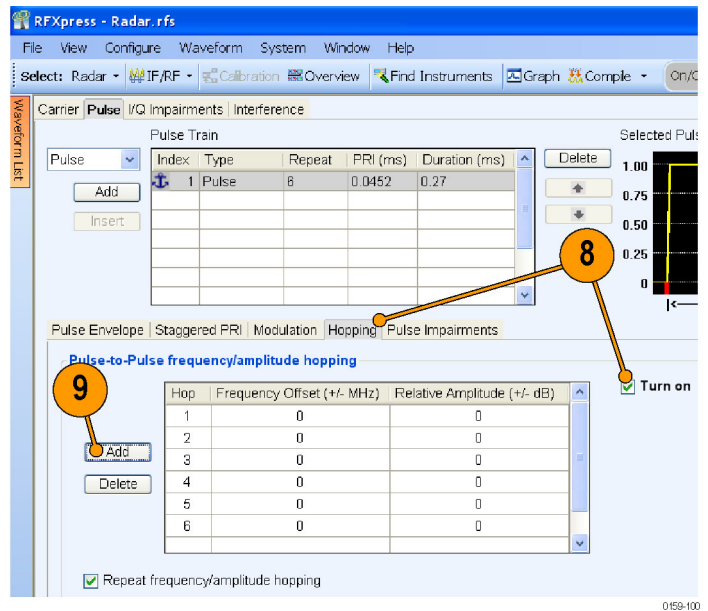
- **Amplitude Relative to Carrier** to 0 dB (default).
- **Offset from Carrier Frequency** to 0 Hz (default).
- **Repeat** to 6.

- Click the **Modulation** tab and set **Select Modulation** to No Modulation.



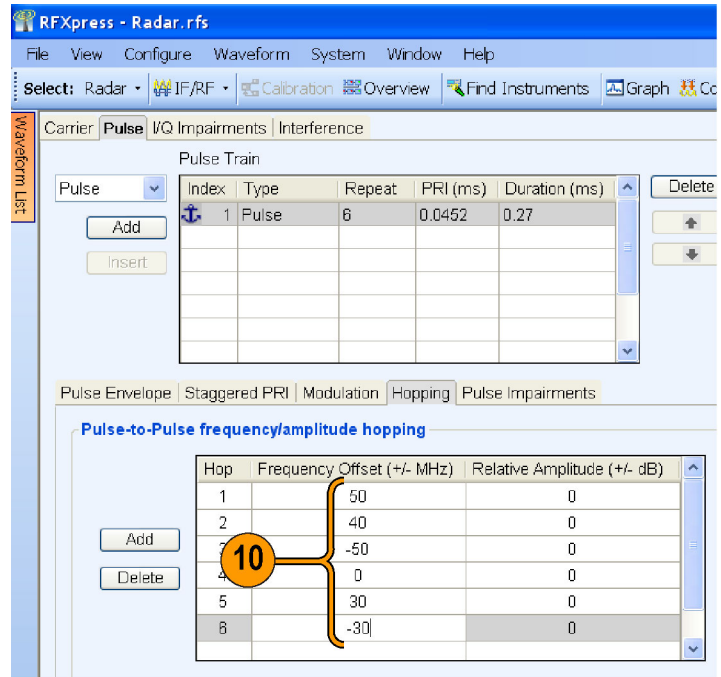
- Click the **Hopping** tab and select Turn on.
- In the table, click **Add** to add rows.

NOTE. You cannot add more rows than the repeat value (6 in this case)



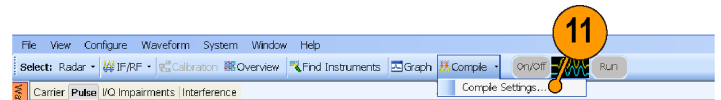
10. Set the following:

- Frequency Offset for the first hop to 50 MHz.
- Frequency Offset for the second hop to 40 MHz.
- Frequency Offset for the third hop to -50 MHz.
- Frequency Offset for the fourth hop to 0 MHz.
- Frequency Offset for the fifth hop to 30 MHz.
- Frequency Offset for the sixth hop to -30 MHz.



0159-101

11. From the toolbar, click **Compile Settings**.

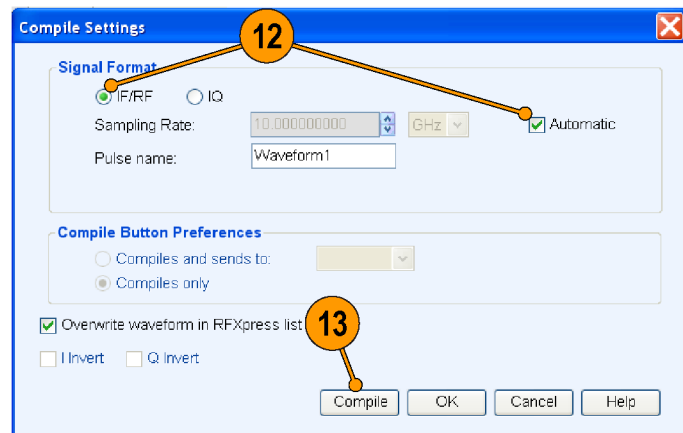


0159-102

12. Ensure the following:

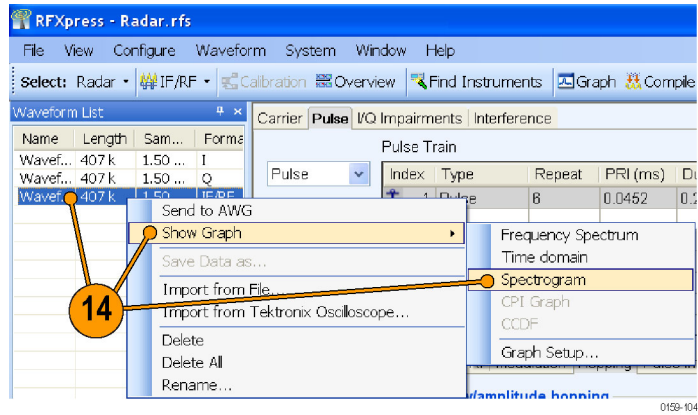
- **Signal Format** is IF/RF.
- **Automatic** is selected.

13. Click **Compile**.



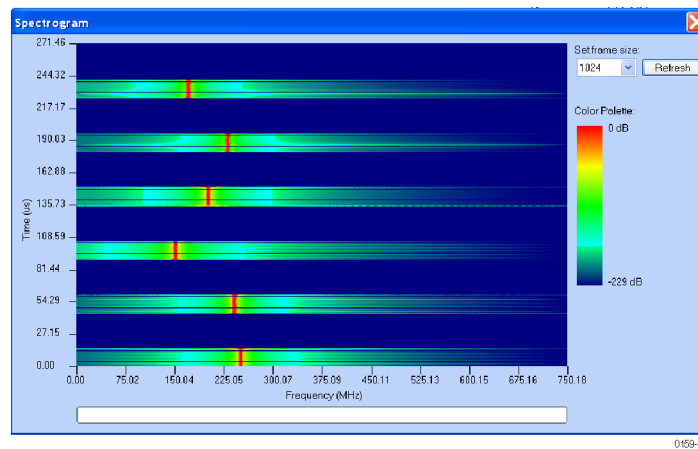
0159-139

14. The compiled pulse is displayed in the Waveform List. In the Waveform List, select the IF/RF signal and right-click. Select **Show Graph > Spectrogram** to display the graph of the pulse.

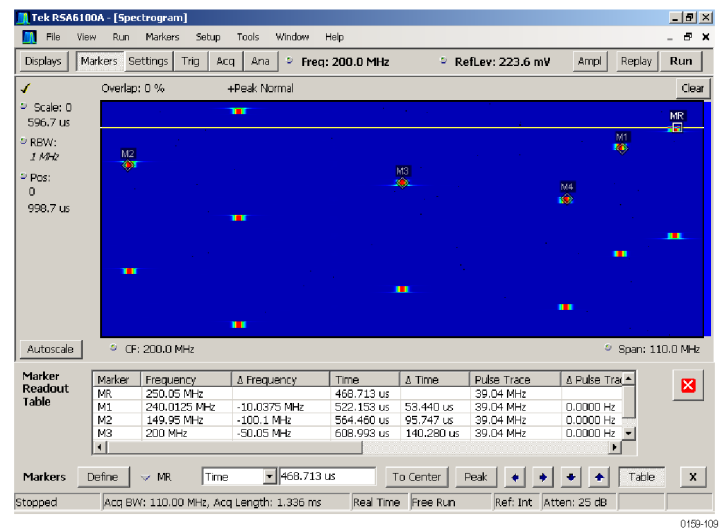


15. The spectrogram is as shown.

NOTE. For better resolution, increase the frame size and click Refresh.



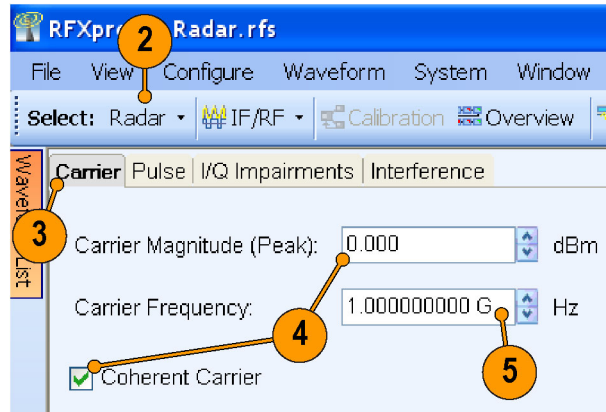
16. The spectrogram as seen in a Tektronix RSA6100A is as shown.



Creating Costa's Modulation

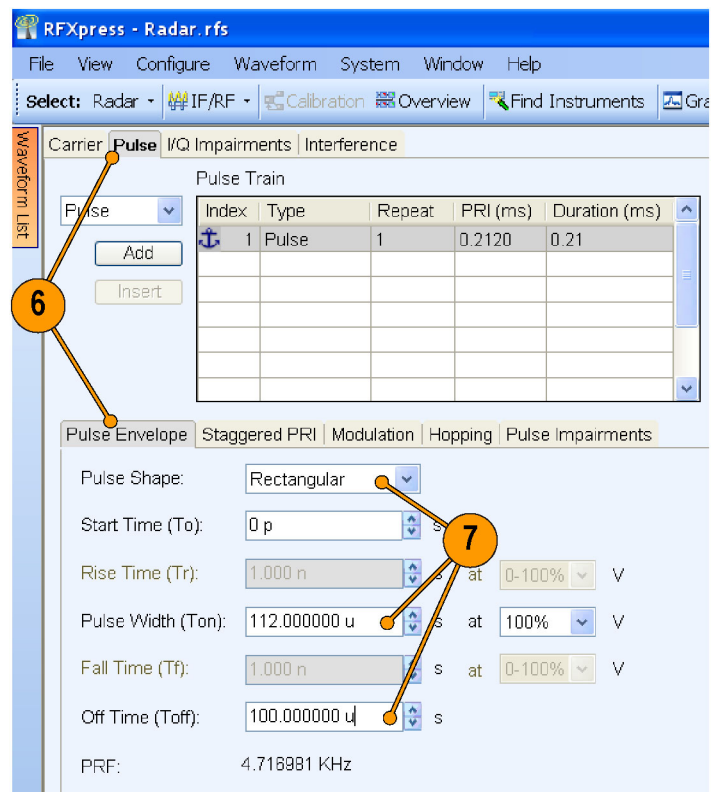
You can use RFXpress to test receivers with Costa's modulation which are used for better range and Doppler resolution.

1. Start RFXpress.
2. From the toolbar, click **Select > Radar**.
3. Click the **Carrier** tab.
4. Keep the defaults for **Coherent Carrier** (enabled) and **Carrier Magnitude (Peak)**.
5. Set the desired **Carrier Frequency**, for example to 1 GHz.



0159-110

6. Select the **Pulse** tab and select the **Pulse Envelope** tab.
7. Set the following:
 - **Pulse Shape** to Rectangular.
 - **Pulse Width** to 112 μ s.
 - **Off Time** to 100 μ s.



0159-111

8. Click the **Modulation** tab and set **Select Modulation** to User Defined Step FM.

You will create a Costa's code of seven steps with $\Delta f = 42.4$ MHz. The code that will be used is 3605412.

9. In **Add Steps** enter 7.

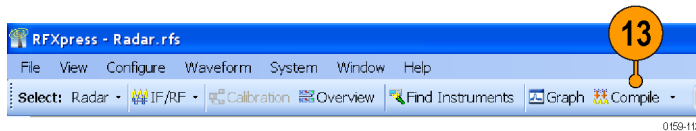
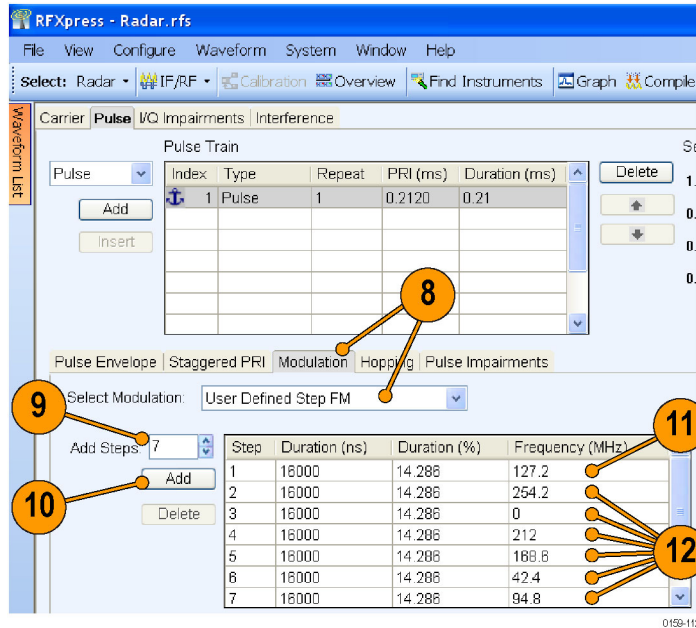
10. Click **Add**.

11. In the table, enter the following:

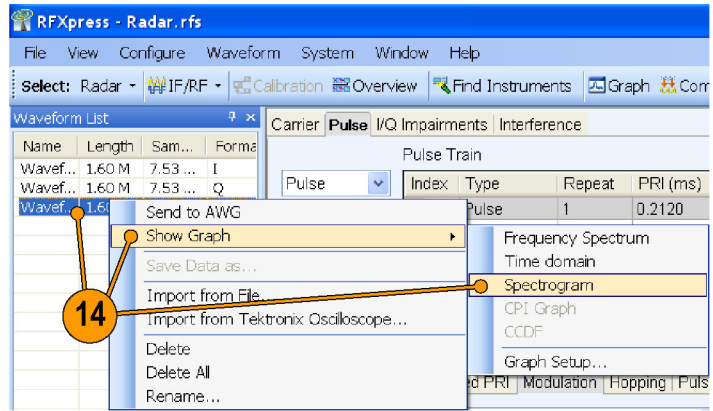
- **Duration** to 16000 ns.
- **Frequency** to 127.2 MHz.

12. Repeat step 11 for all the steps in the code. Keep the duration constant (16000 ns) and calculate the frequency using the formula $\Delta f * \text{code}$ (for example $42.5 * 3$, $42.5 * 6$, $42.5 * 0$, and the rest).

13. From the toolbar, click **Compile**.

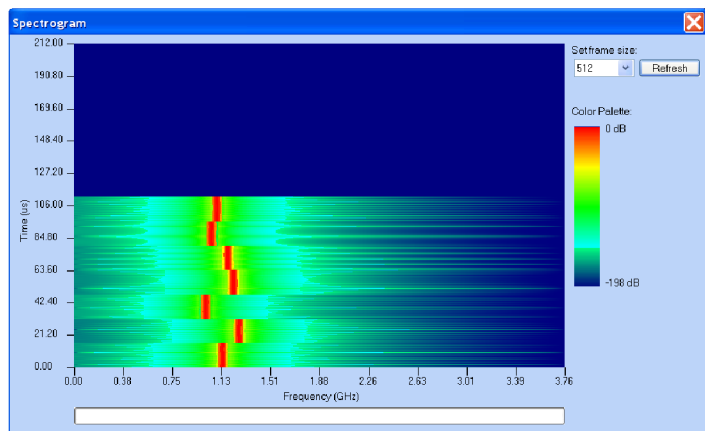


14. In the waveform list, select the IF/RF. Right-click and select **Show Graph > Spectrogram**.



0159-114

15. The spectrogram is as shown.

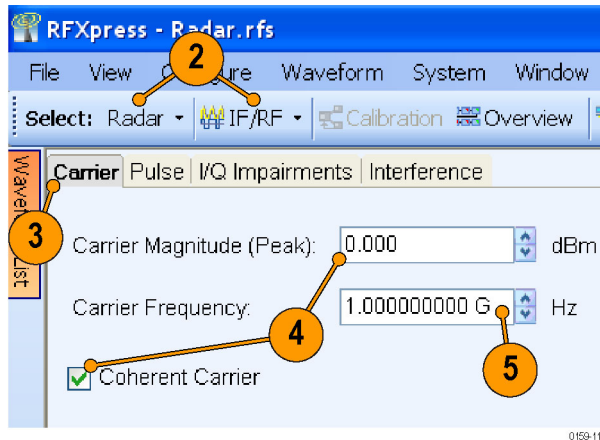


0159-115

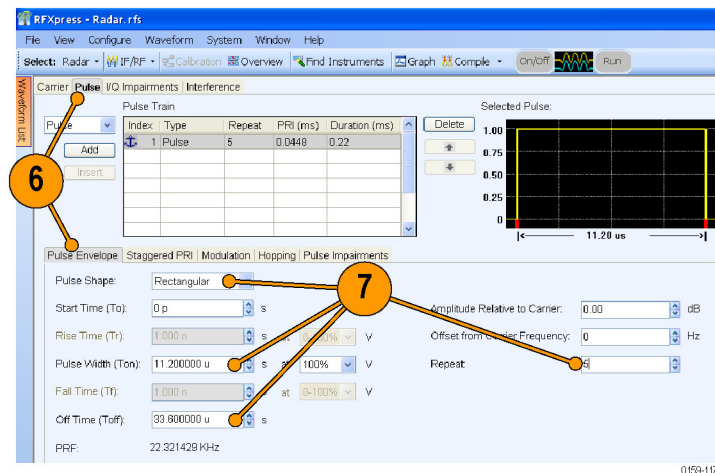
Creating a Radar Waveform using Staggered PRI for Better Range Ambiguity

One of the applications of Staggered PRI is in Moving Target Indication (MTI) Radars which have to resolve range and Doppler ambiguities. In this example shows how to create pulse-to-pulse staggering.

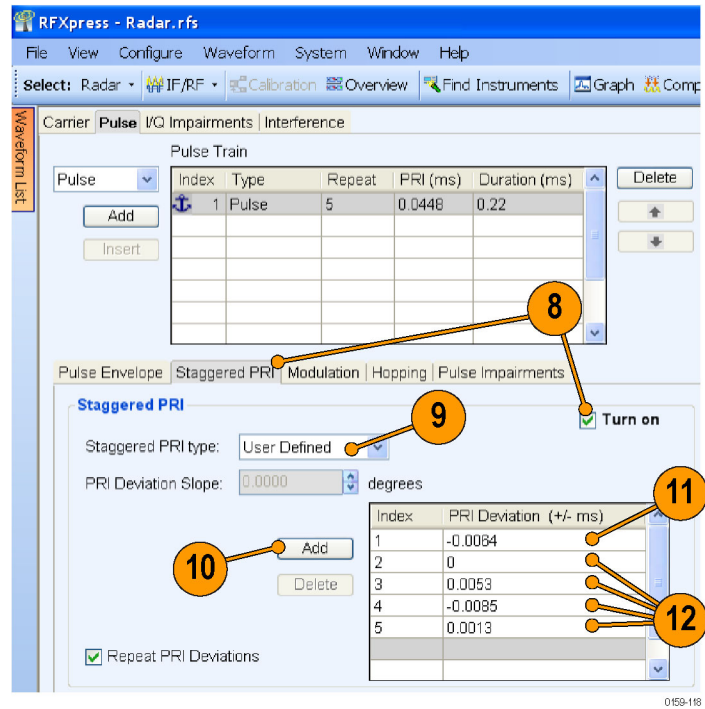
1. Start RFXpress.
2. From the toolbar, click **Select > Radar**.
Select the signal type as **IF/RF**.
3. Click the **Carrier** tab.
4. Keep the defaults for **Coherent Carrier** (enabled) and **Carrier Magnitude (Peak)**.
5. Set the **Carrier Frequency** to 1 GHz.



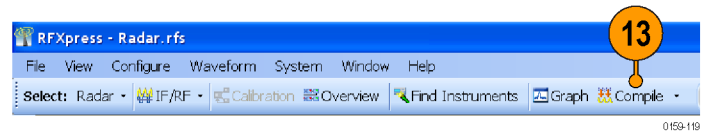
6. Select the **Pulse** tab and select the **Pulse Envelope** tab.
7. Set the following:
 - **Pulse Shape** to Rectangular.
 - **Pulse Width** to 11.2 μ s.
 - **Off Time** to 33.6 μ s.
 - **Repeat** to 5.



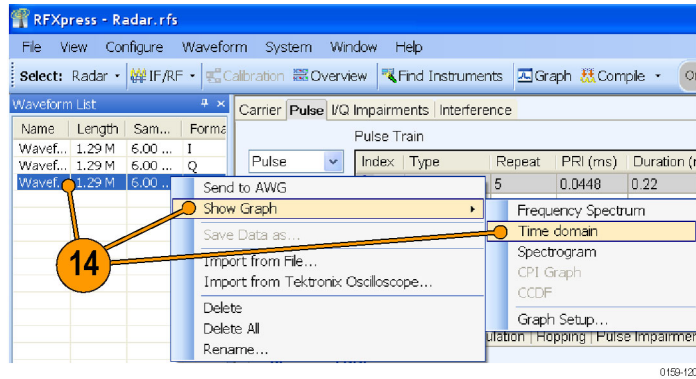
8. Click the **Staggered PRI** tab and select **Turn on**.
9. Set **Staggered PRI type** to User Defined.
You will change the PRI for each pulse by adding a deviation. The PRI is calculated as follows: Current PRI + deviation. The deviation is specified in the table.
10. Click **Add** to add a row to the table.
11. Enter the deviation -0.0064 (in ms) for the first pulse.
12. Repeat steps 10 and 11 to enter the deviation for the remaining pulses as: 0, 0.0053, -0.0085 , and 0.0013.



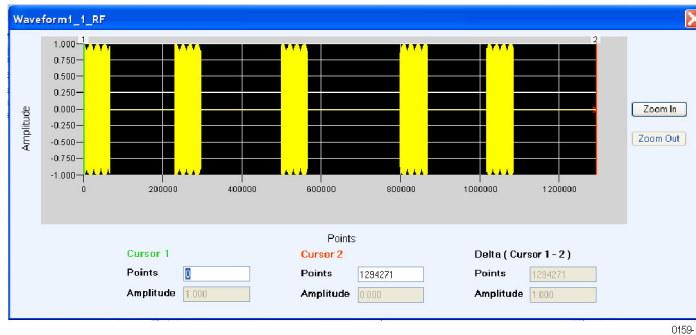
13. From the toolbar, click **Compile**.



- In the waveform list, select the IF/RF. Right-click and select **Show Graph > Time domain**.



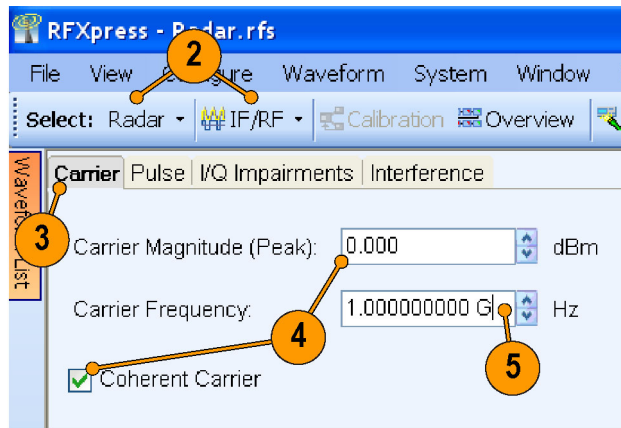
- The time domain graph is as shown.



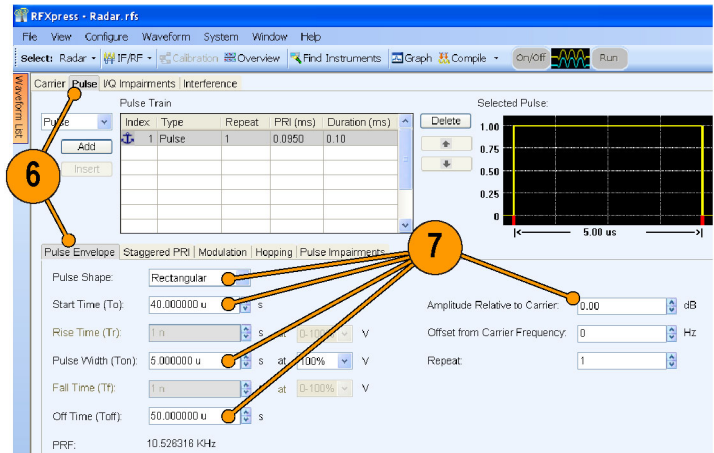
Simulating Multiple Targets for Radar Receiver Testing (Different Pulse Groups)

You can use RFXpress to simulate three targets. Assuming that the transmitter sends a pulse of duration 5 μ s with a PRI of 500 μ s, we will simulate three targets – the first at 40 μ s from the reference, the second at 120 μ s, and the third at 300 μ s.

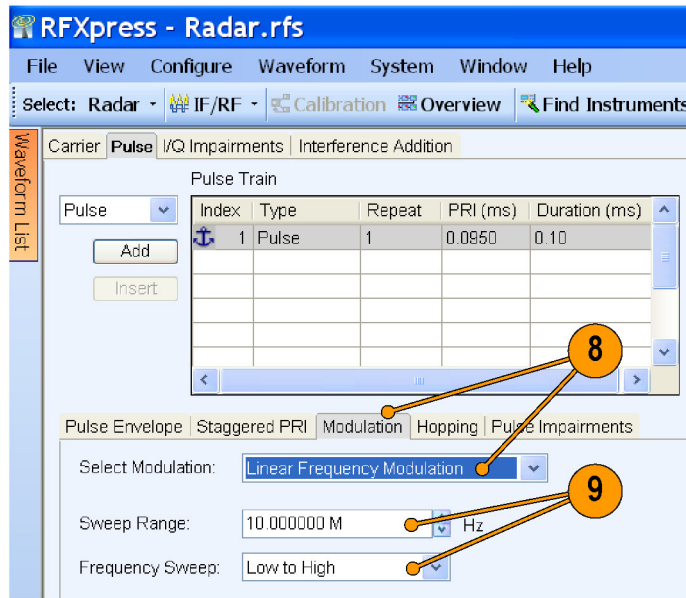
- Start RFXpress.
- From the toolbar, click **Select > Radar**. Select the signal type as **IF/RF**.
- Click the **Carrier** tab.
- Keep the defaults for **Coherent Carrier** (enabled) and **Carrier Magnitude (Peak)**.
- Set the **Carrier Frequency** to 1 GHz.



6. Select the **Pulse** tab and select the **Pulse Envelope** tab.
7. Set the following:
 - **Pulse Shape** to Rectangular.
 - **Start Time** to 40 μ s.
 - **Pulse Width** to 5 μ s at 100%.
 - **Off Time** to 50 μ s.
 - **Amplitude Relative to Carrier** to 0 dB (default).



8. Click the **Modulation** tab and set **Select Modulation** to Linear Frequency Modulation.
9. Set the following:
 - **Sweep Range** to 10 MHz.
 - **Frequency Sweep** to Low to High.

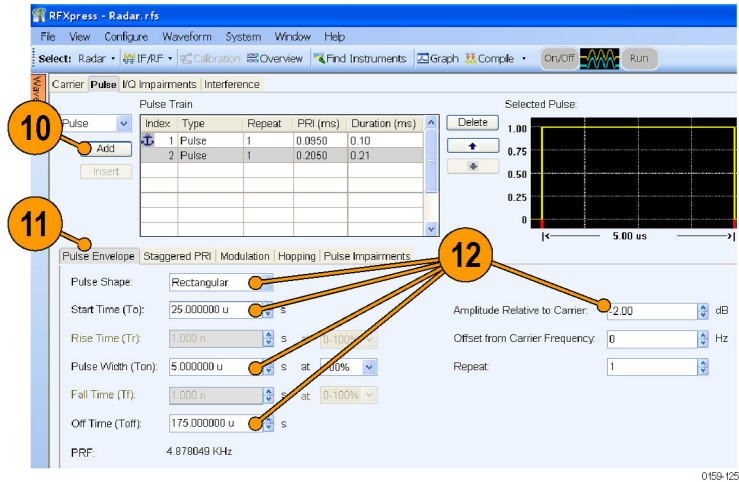


10. Click **Add** to add a pulse. Select the newly added pulse.

11. Select the **Pulse Envelope** tab.

12. Select the pulse and set the following:

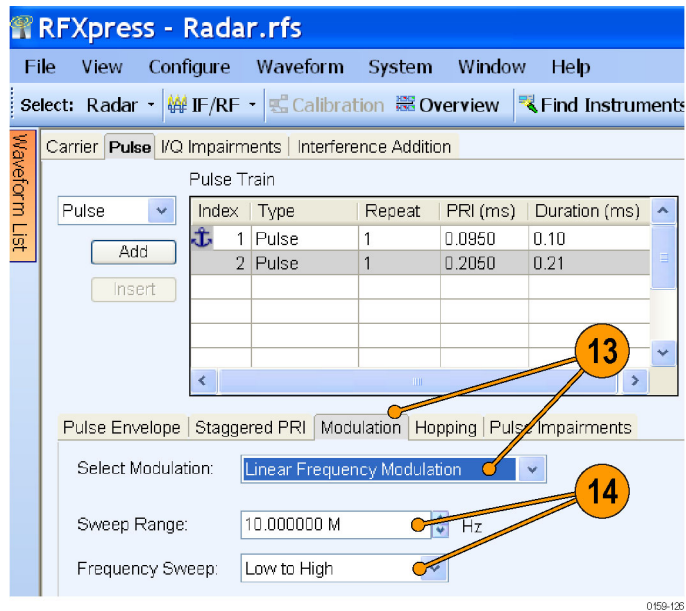
- **Pulse Shape** to Rectangular.
- **Start Time** to 25 μ s.
- **Pulse Width** to 5 μ s @ 100% .
- **Off Time** to 175 μ s.
- **Amplitude Relative to Carrier** to -2 dB.



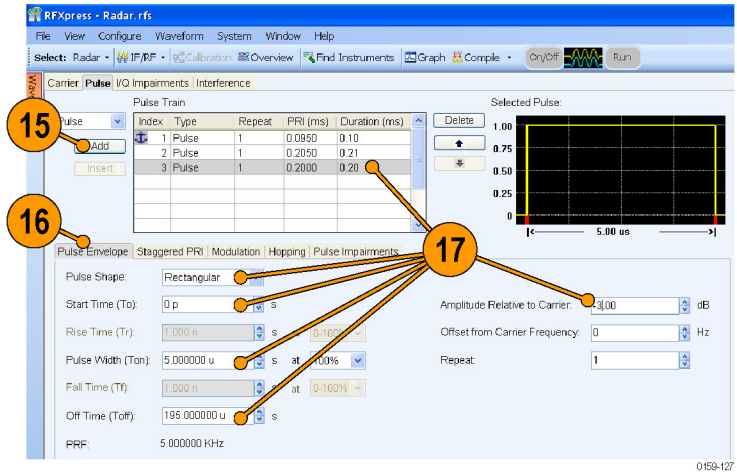
13. Click the **Modulation** tab and set **Select Modulation** to Linear Frequency Modulation.

14. Set the following:

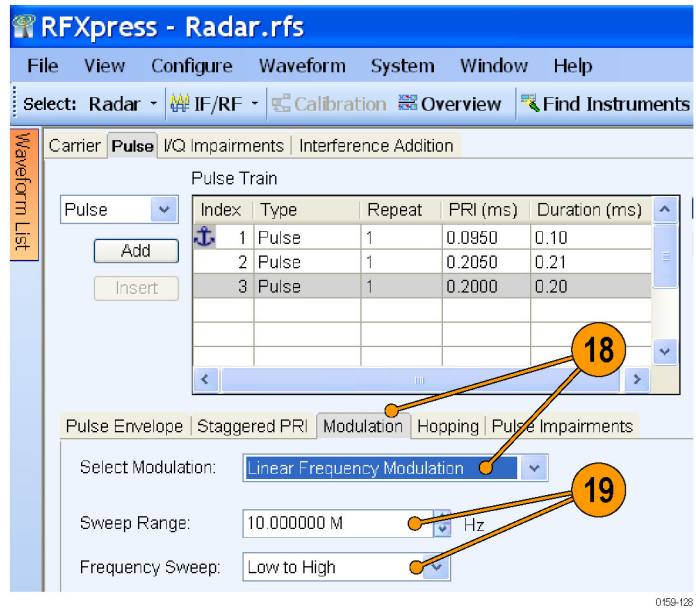
- **Sweep Range** to 10 MHz.
- **Frequency Sweep** to Low to High.



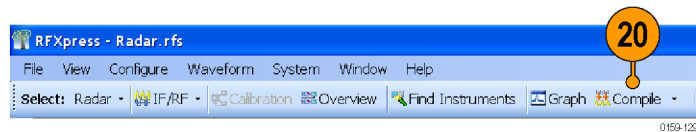
15. Click **Add** to add a pulse.
16. Select the **Pulse Envelope** tab.
17. Select the pulse and set the following:
 - **Pulse Shape** to Rectangular.
 - **Start Time** to 0 μ s.
 - **Pulse Width** to 5 μ s @ 100% .
 - **Off Time** to 195 μ s.
 - **Amplitude Relative to Carrier** to -3 dB.



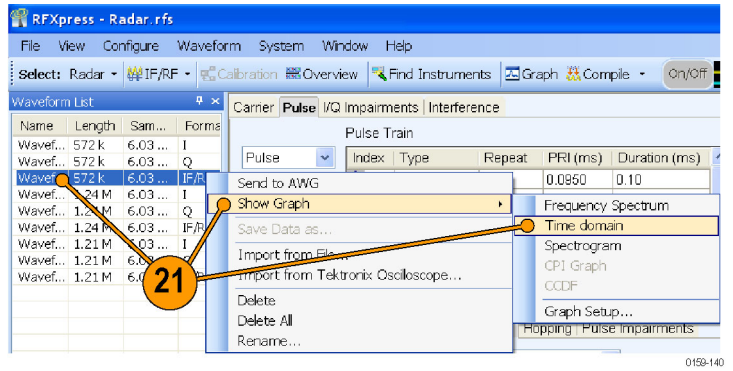
18. Click the **Modulation** tab and set **Select Modulation** to Linear Frequency Modulation.
19. Set the following:
 - **Sweep Range** to 10 MHz.
 - **Frequency Sweep** to Low to High.



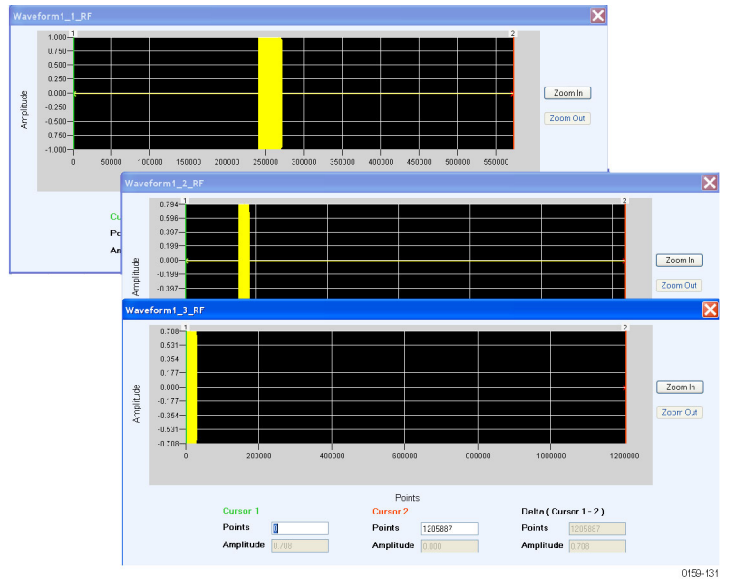
20. From the toolbar, click **Compile**.



- In the waveform list, select an IF/RF waveform from the list. Right-click and select **Show Graph > Time domain**.



- The time domain graphs are as shown.



Generating and Measuring a Wideband LFM with Calibration using a Tektronix Oscilloscope

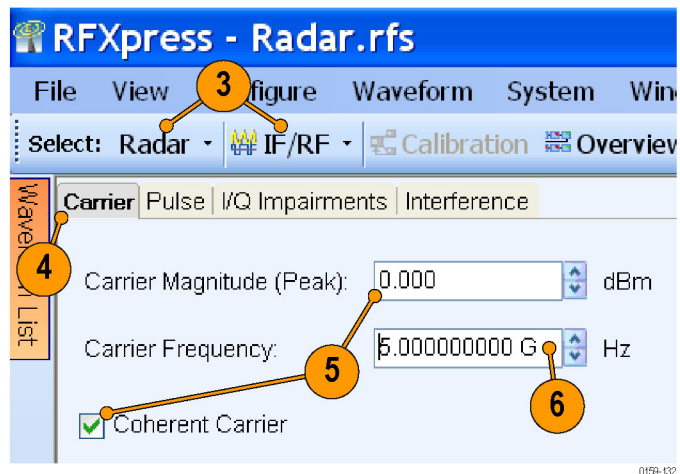
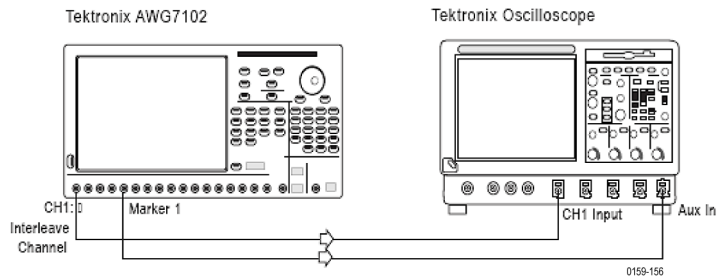
1. Set up the instruments as shown. The instruments must be connected over a LAN.

You will need:

- A Tektronix AWG7102 with Option 06 running RFXpress software.
- A Tektronix DPO oscilloscope to capture the signal. Ensure that the oscilloscope is calibrated.
- Connecting cable.

NOTE. Ensure that the output of the AWG Interleave channel is connected to Channel 1 of the oscilloscope and Marker 1 of the AWG is connected to Aux In of the DPO oscilloscope.

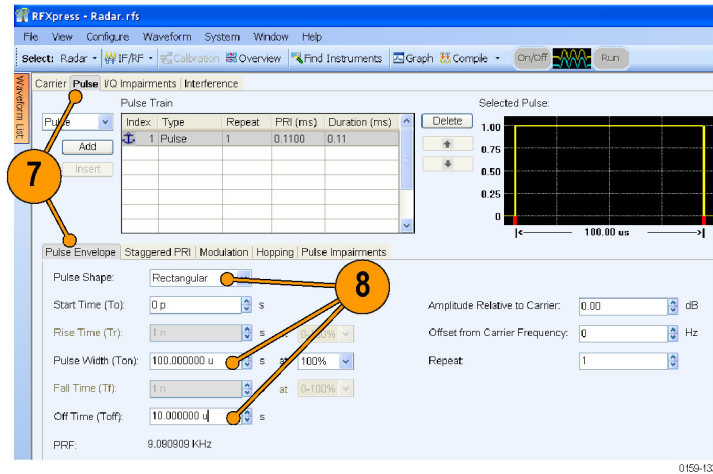
2. Start RFXpress on the AWG7102.
3. From the toolbar, click **Select > Radar**. Select the signal type as **IF/RF**.
4. Click the **Carrier** tab.
5. Keep the defaults for **Coherent Carrier** (enabled) and **Carrier Magnitude (Peak)**.
6. Set the **Carrier Frequency** to 5 GHz.



7. Select the **Pulse** tab and select the **Pulse Envelope** tab.

8. Set the following:

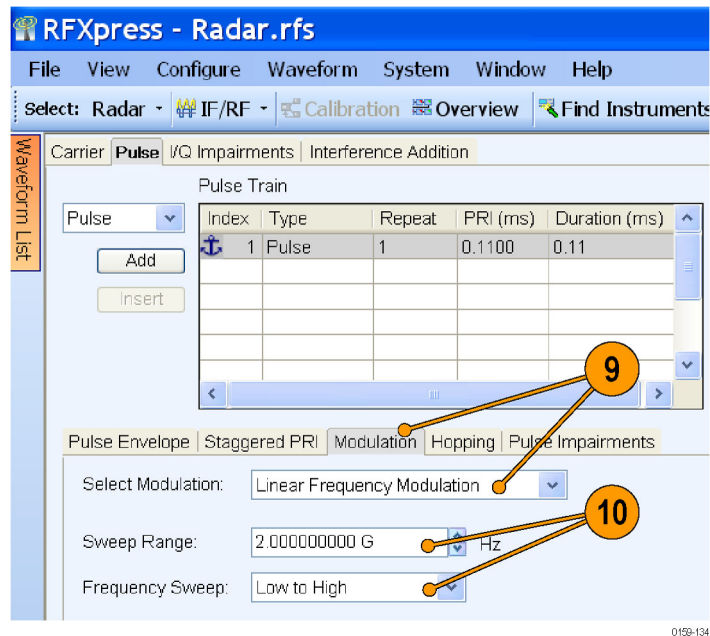
- **Pulse Shape** to Rectangular.
- **Pulse Width** to 100 μ s.
- **Off Time** to 10 μ s.



9. Click the **Modulation** tab and set **Select Modulation** to Linear Frequency Modulation.

10. Set the following:

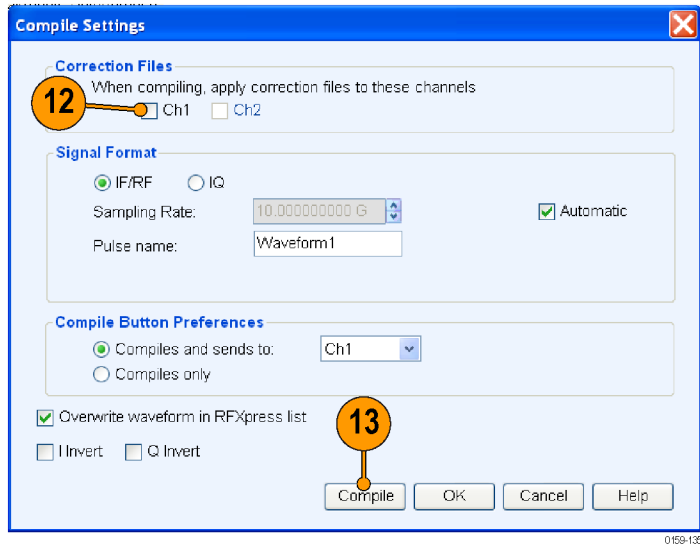
- **Sweep Range** to 2 GHz.
- **Frequency Sweep** to Low to High.



11. From the toolbar, click **Compile > Compile Settings**.

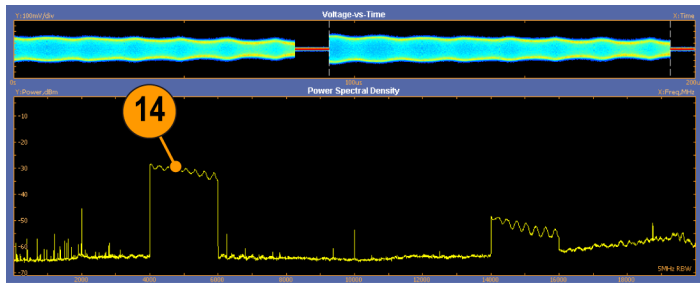


12. Ensure that **When compiling, apply correction files to these channels** is disabled.
13. Click **Compile**.



0159-136

14. Capture the waveform on the oscilloscope and observe the signal spectrum using Tektronix Ultra Wideband Spectral Analysis software. Note that the spectrum is not flat.



0159-136

15. From the toolbar, click **Calibration**.
- NOTE.** You will be prompted with a message to compile your setup, if you have not already done so. Click *Continue* to proceed with calibration.



0159-142

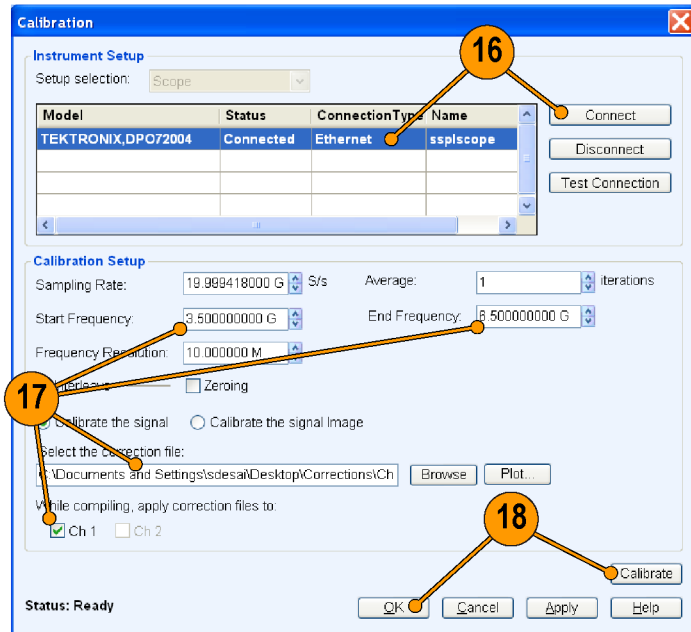
16. The Calibration window displays a table of instruments connected on the network. Select the DPO oscilloscope and click **Connect**. The status changes to Ready.

NOTE. You can click *Test Connection* to test the status of the instrument.

17. Set the following:

- **Start Frequency** to 3.5 GHz
- **End Frequency** to 6.5 GHz
- Enter the path for the correction files
- For **While compiling, apply correction files to**, select Ch1

18. Click **Calibrate**. After the calibration is complete, click **OK**.



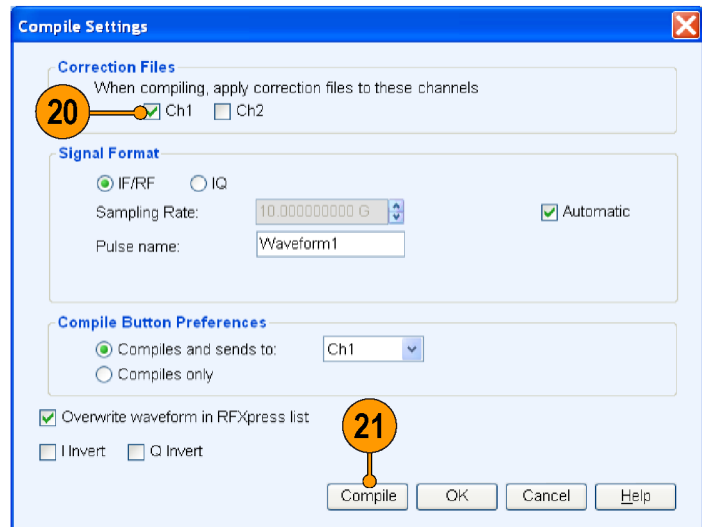
0159-137

19. From the toolbar, select **Compile > Compile Settings**.



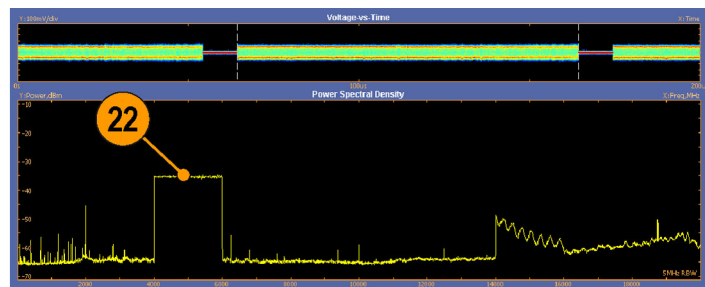
0159-143

20. Ensure that **When compiling, apply correction files to these channels** is enabled and Ch 1 is selected.
21. Click **Compile**.



0159-144

22. Capture the waveform on the oscilloscope and observe the signal spectrum using Tektronix Ultra Wideband Spectral Analysis software. Note that the spectrum shows a flat response.



0159-138

Index

A

Adding
 impairments, 7
 interference, 7, 14, 29, 40
 power ramping, 7
 Alpha/B*T, 4
 Amplitude, 4, 14, 16, 31, 34, 38, 39, 40
 Amplitude relative to carrier, 43, 45, 55, 56, 57
 Anchor
 carrier, 19
 Arbitrary waveform generator
 AWG7102, 21, 30, 33, 34, 36, 38, 39, 59
 Automatic, 22, 44
 Average, 30
 AWG
 sequence mode, vi

B

Band group, 30, 31, 34
 Band hopping, vi
 Bands, 30
 Base data, 6
 PRBS, 22
 Base frequency, 6
 Baseband offset, 4
 Baseband signal, 12
 Baseband signals
 I, Q, vi
 IQ, 3

C

C/I, 14
 Calibrate, 31, 62
 Calibration, 21, 23, 30, 32, 34, 61
 Carrier
 frequency, 42, 45, 49, 52, 54, 59
 magnitude (peak), 42, 45, 49, 52, 54, 59
 offset, 14
 Carrier spacing, 6

Center frequency, 38
 Channel skew, 38, 39
 Closing the software, 1
 Coherent carrier, 42, 45, 49, 52, 54, 59
 Compile, 15, 17, 24, 26, 29, 32, 38, 41, 44, 50, 53, 57
 setting, 9
 Compile and send, 35
 Compile settings, 4, 9, 19, 22, 24, 32, 35, 43, 47, 60, 62
 Conformance, 39
 Correction file, 24, 31, 32
 calibration, vi
 path, 31
 Correction files, 22
 apply, 61, 62, 63
 Cycle, 36

D

Delay, 16
 Documentation, vi

E

End frequency, 24
 EVM, 23, 25
 Exit, 1

F

Fall time, 45
 File
 import, 11
 iqt, 12, 13
 sample rate, 13
 Filter, 4
 Frequency, 14, 34, 36, 37, 40
 Frequency offset, 47
 Frequency sweep, 43, 55, 56, 57, 60

G

Gated noise, vi, 29

Generic signal, 3, 22
 IF/RF, 11
 Graphs, 10
 CCDF, 10
 constellation, 10, 27
 I & Q, 15, 27
 pulse shape, 17
 spectrogram, 20, 48, 51
 spectrum, 10, 15, 27, 40
 time domain, 29, 44, 54, 58

H

Hopping, 18, 19
 pulse-to-pulse, 46
 Hopping pattern, 26
 user defined, 28

I

I offset, 37
 I/Q, 34
 calibration, 34
 path, 34
 type, 34
 I/Q adjustments, 37
 I/Q Impairments tab, 8
 I/Q path, 34
 IF/RF, 16, 18, 39, 44, 47, 52, 54, 59
 Impairments, vi, 7
 adding, 7
 real-world, 39
 Import from file, 11
 RTSA file, 11
 Input file
 sample rate, 13
 Installation, 1
 Interference, vi, 7, 29
 adding, 7, 29
 sinusoidal, 14
 Interference Addition tab, 8, 14, 29, 40
 Interleave, 30
 IQ calibration, 34
 IQ type, 34

K

Key features
 baseband, vi
 radar, vi
 UWB-WiMedia, vi

M

Manuals, vi
 RFXpress RFX100
 Installation, vi, 1
 RFXpress RFX100 User, vi
 Modulation, 4, 6, 43, 46, 50, 55, 56,
 57, 60
 duration, 50
 frequency, 50
 Multipath tab, 16
 Multi-Carrier
 add carrier, 6
 Multi-Carrier signals, vi
 RF, 5
 Multipath
 simulating, 16

O

Off time, 43, 45, 49, 52, 55, 56, 57,
 60
 Offset from carrier, 14
 Offset from carrier frequency, 43, 45
 On/Off, 36
 Online help, vi
 Oscilloscope, 21, 59
 DPO70804, 30
 DSA72004, 33, 34, 35, 39
 Oversampling, 9

P

Packets, 29
 Performance signal generator
 E8267D, 33, 34, 35, 37, 39
 Phase, 16

PLCP Header, 29
 Power ramping, 7, 29
 adding, 7
 Power ramping tab, 7
 Preface, v
 Previewing Graphs, 10
 PRF, 43, 45
 PRI, 43, 45
 Pulse
 envelope, 43, 45, 49, 52, 55,
 56, 57, 60
 shape, 43, 45, 49, 52, 55, 56,
 57, 60
 width, 43, 45, 49, 52, 55, 56,
 57, 60
 Pulse hopping, vi

Q

Q offset, 37

R

Range, 6
 Real time spectrum analyzer
 RSA6114A, 33, 35, 37, 38
 Repeat, 43, 45, 52
 Rise time, 45
 Run, 36

S

Safety Summary, iii
 Sampling rate, 30, 36
 Setup tab, 6
 Signal
 compiling, 4
 generating, 3
 previewing, 10
 Signal type
 IF/RF, 24
 IQ, 3
 RF, 5, 30, 34

Single carrier signals, vi
 generating, 3
 Software upgrades, 1
 Span, 37, 38
 Spectrogram, 20
 Staggered PRI, 53
 type, 53
 Start frequency, 24
 Start time, 43, 45, 55, 56, 57
 Starting the software, 1
 Sweep range, 43, 55, 56, 57, 60
 Symbol rate, 4

T

Tek UWB Spectral Analysis
 software, 33, 35
 TF Code
 user defined, 28

U

UWB, v
 UWB-WiMedia, v, 26, 28, 30, 34
 conformance mode, 26
 custom mode, 28

W

Waveform length
 automatic, 19
 Waveform list, 5, 29
 Waveform rotation, 36, 39
 WiFi signal, 40
 WiMedia spec example packet, 26,
 28
 WiMedia specification, vii
 Window, 4